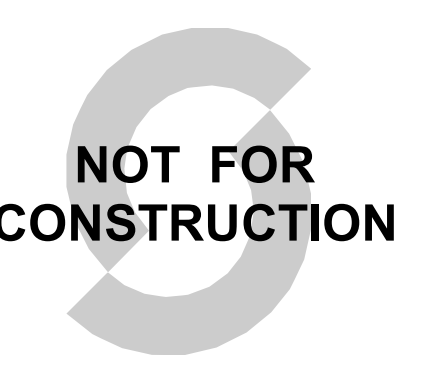


CONFIDENTIAL
THIS DRAWING AND ASSOCIATED DESIGN ELEMENTS ARE CONFIDENTIAL AND THE PROPERTY OF SALAS O'BRIEN, WHICH REMAINS THE COMMON LAW, COPYRIGHT, STATUTORY AND OTHER RIGHTS THEREOF. ANY REPRODUCTION OR DISSEMINATION IS PROHIBITED UNLESS OTHERWISE AGREED TO BY SALAS O'BRIEN. THIS DRAWING (AS WELL AS ANY COPIES) SHALL BE RETURNED TO SALAS O'BRIEN UPON REQUEST.

PROFESSIONAL SEAL



Not for permits, pricing or other official purposes. This document has not been completed or checked and is for general information or comment only.

ISSUE DATE DESCRIPTION
2023-10-27 BID SET



2023-05599-00
OPPIDAN

10 MW ALBQ Data Center

10 MW Data Center Prototype
Daytona Road NW, Albuquerque, New Mexico

NOTES



REVISIONS

Δ	DESCRIPTION	DATE
1	DFT Resubmittal	2024-04-23

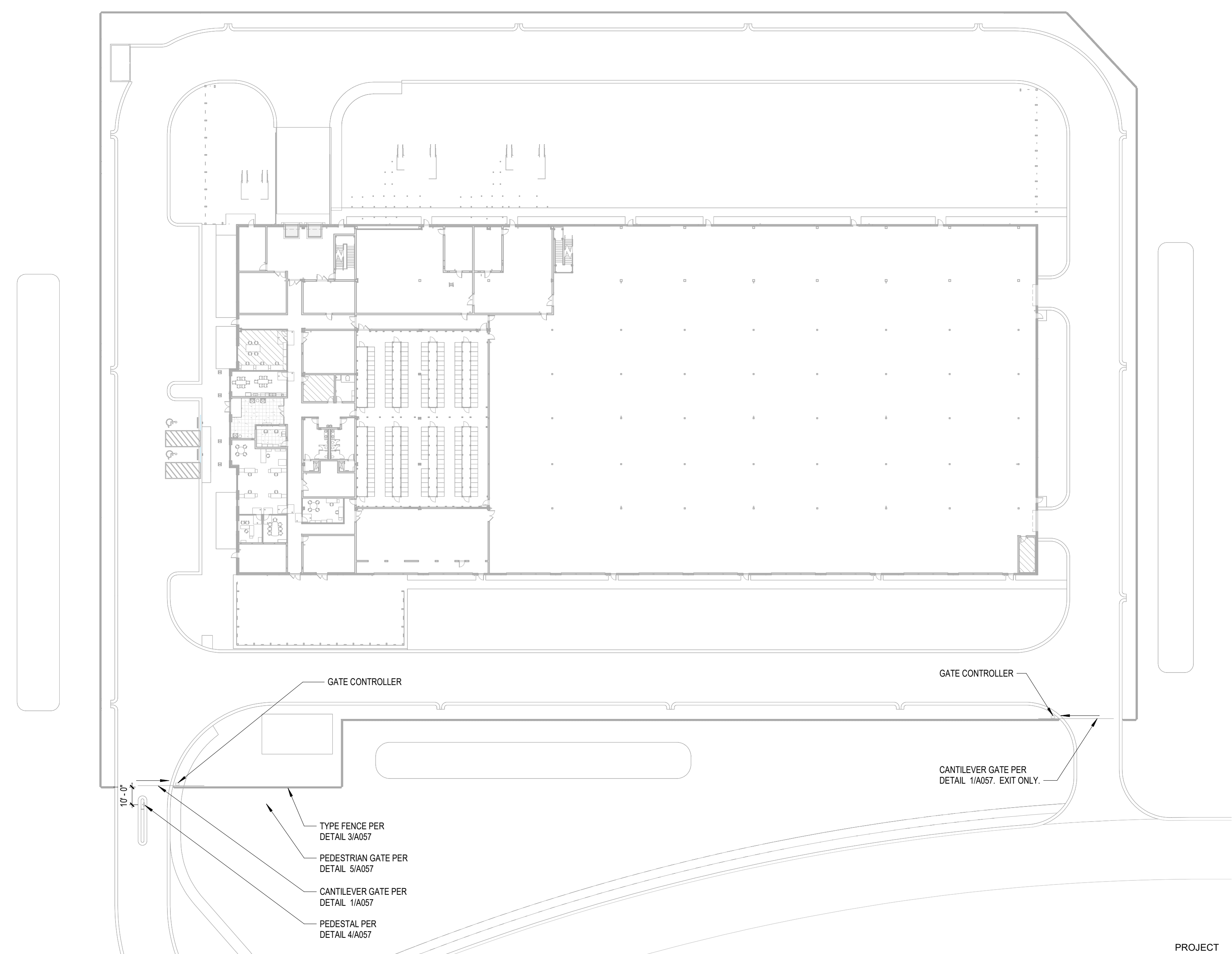
CHECKED BY DRAWN BY
MK DT

SHEET NAME

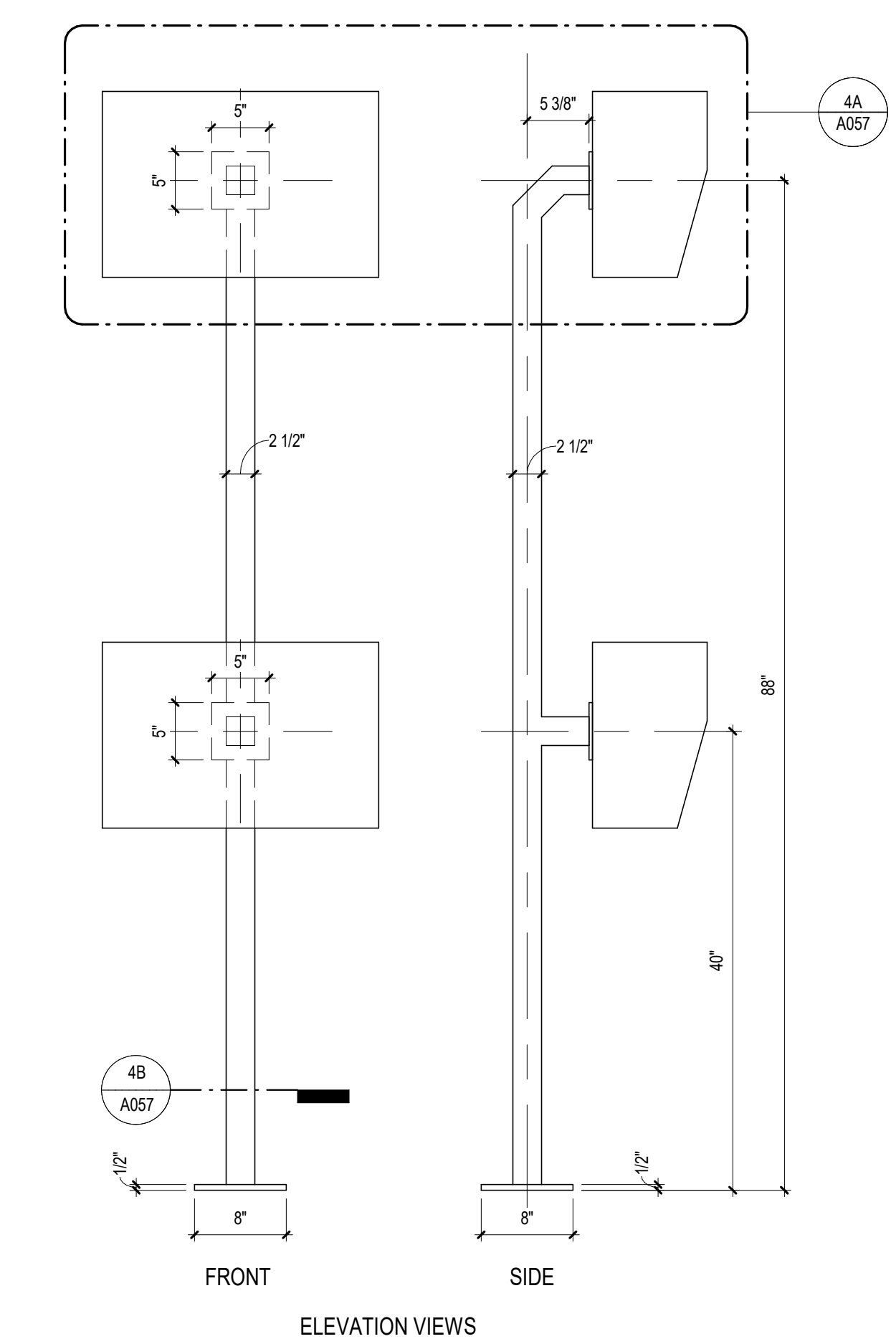
FENCE & GATE DETAILS

SHEET NUMBER REVISION

A057 1



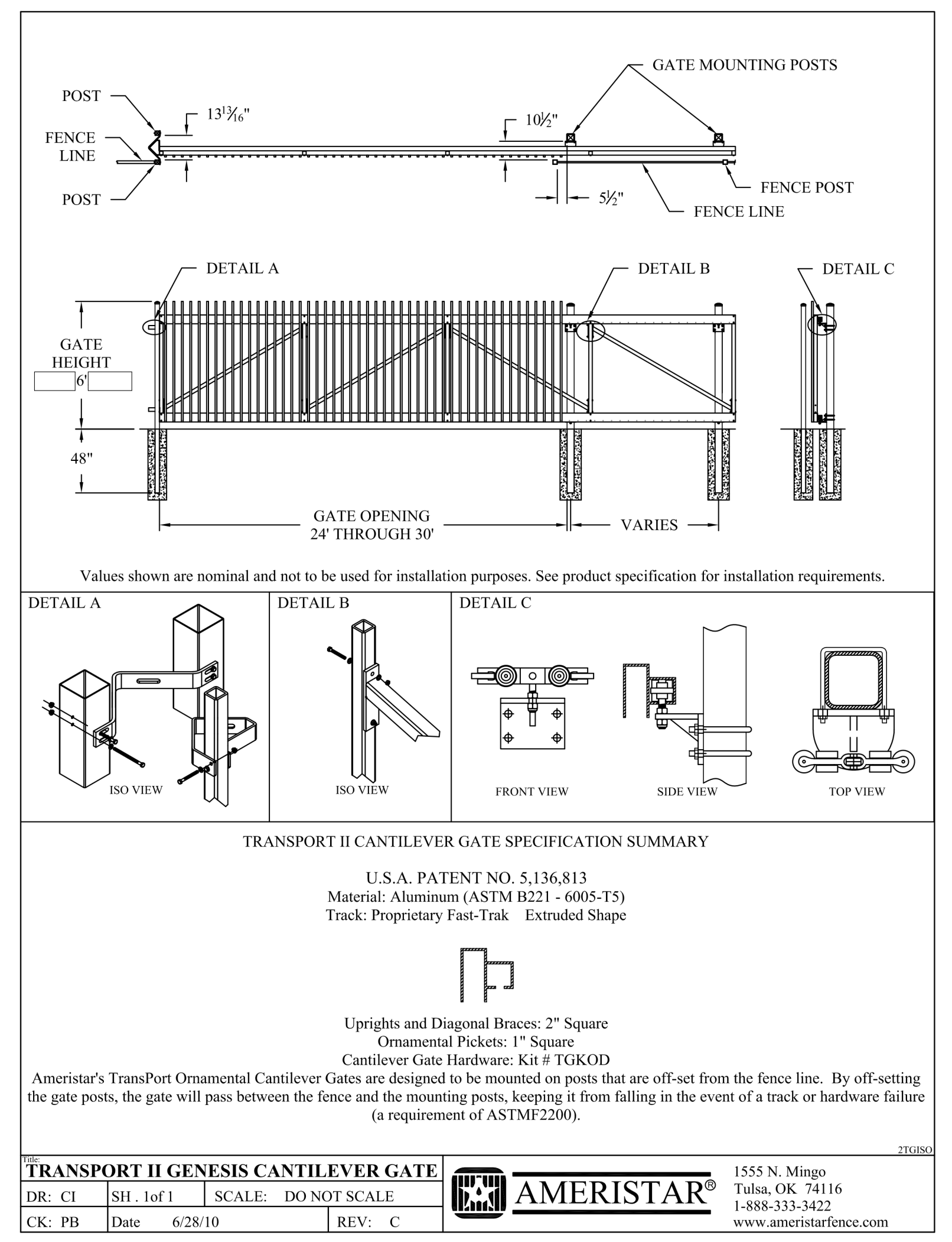
2 SECURITY FENCE LAYOUT
SCALE: 1" = 40'-0"



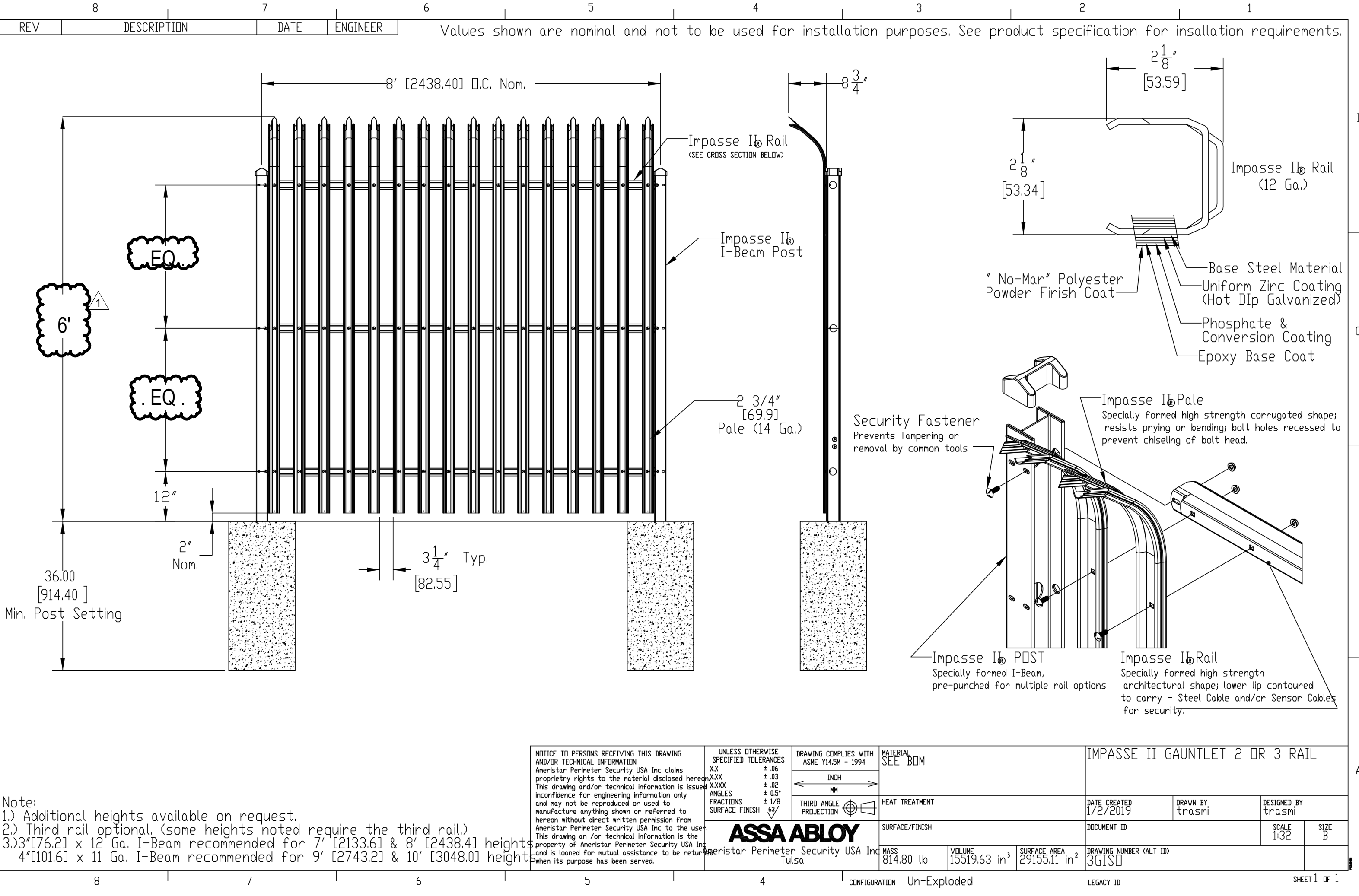
4 CARD READER PEDESTAL
SCALE: 1" = 1'-0"

4B PEDESTAL BASE
SCALE: 1 1/2" = 1'-0"

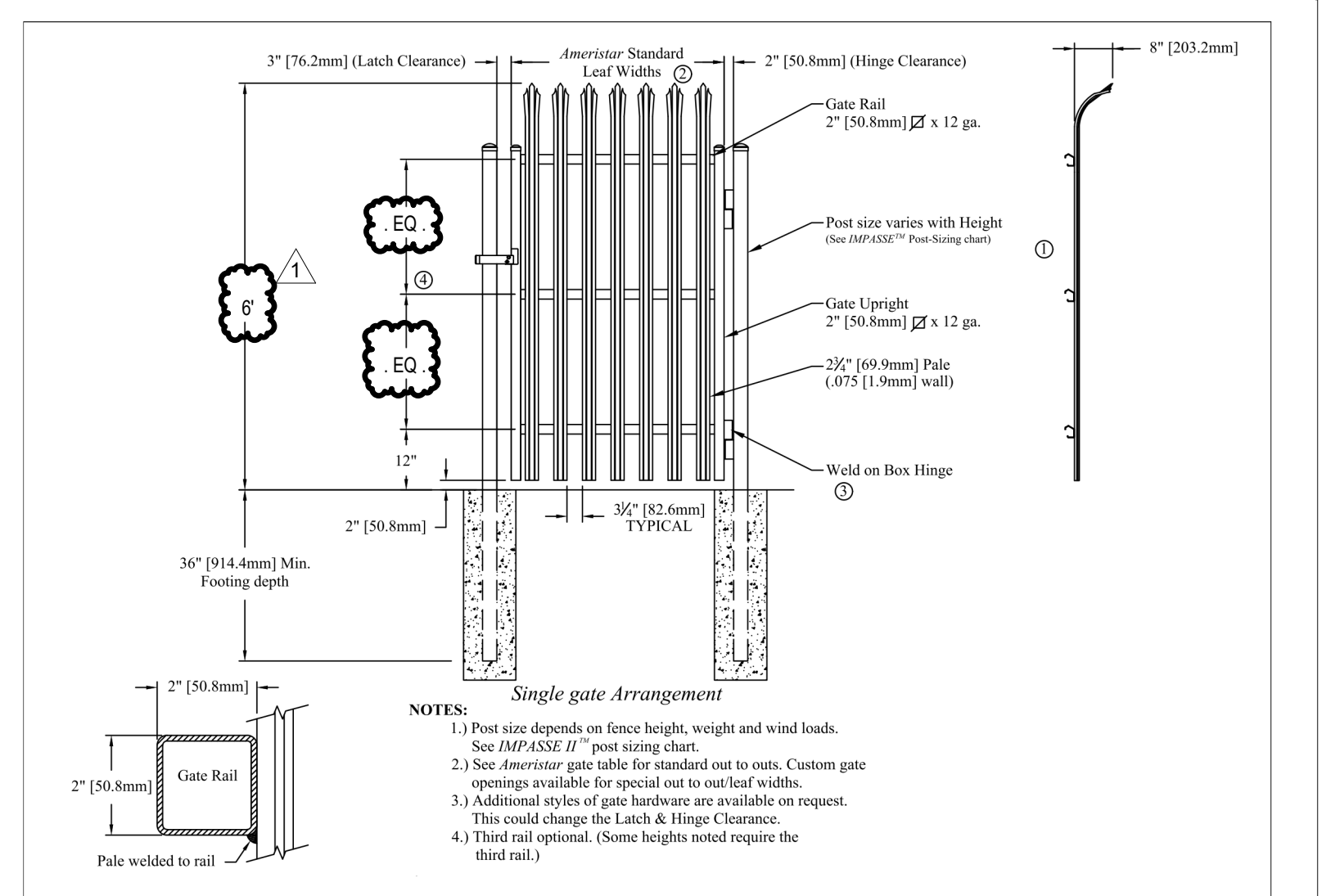
4A CARD READER
SCALE: 1 1/2" = 1'-0"



1 TRANSPORT II GENESIS CANTILEVER GATE
N.T.S. (NOT TO SCALE)



3 IMPASSE II GAUNTLET 2 OR 3 RAIL
N.T.S. (NOT TO SCALE)

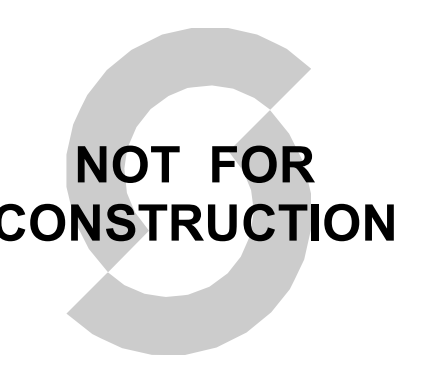


5 IMPASSE GAUNTLET 2/3 RAIL
N.T.S. (NOT TO SCALE)

4/24/2024 4:22:10 AM Autodesk Docs: /0202-05599-00P-Albuquerque.OPP-Albuquerque.DC/OPP5599-SOB-XXZ-3D-A-0001.rvt

CONFIDENTIAL
THIS DRAWING AND ASSOCIATED DESIGN ELEMENTS ARE CONFIDENTIAL AND THE PROPERTY OF SALAS O'BRIEN, WHICH IS THE TRADE NAME OF SALAS O'BRIEN, STATUTORY AND OTHER RIGHTS THEREIN. ANY UNAUTHORIZED REUSE OR REPRODUCTION IS PROHIBITED UNLESS OTHERWISE AGREED TO BY SALAS O'BRIEN. THIS DRAWING AS WELL AS ANY COPIES SHALL BE RETURNED TO SALAS O'BRIEN UPON REQUEST.

PROFESSIONAL SEAL



Not for permits, pricing or other official purposes. This document has not been completed or checked and is for general information or comment only.

ISSUE DATE DESCRIPTION
2023-10-27 BID SET



2023-05599-00
OPPIDAN

10 MW ALBQ Data Center

10 MW Data Center Prototype
Daytona Road NW, Albuquerque, New Mexico

NOTES



REVISIONS

Δ	DESCRIPTION	DATE
1	DFT Resubmittal	2024-04-23

CHECKED BY DRAWN BY
MK TS

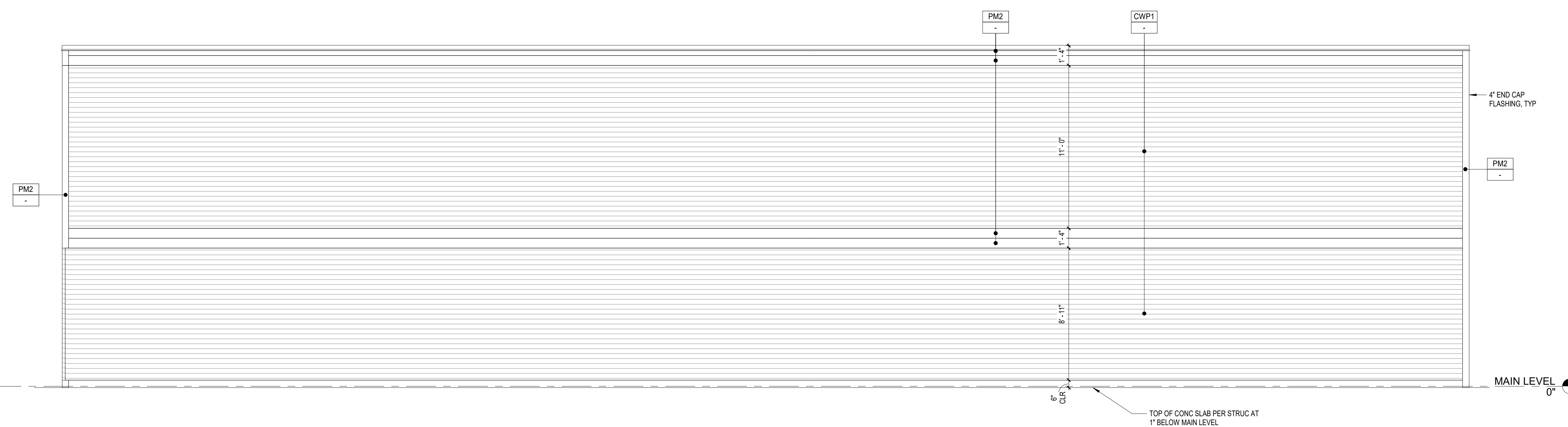
SHEET NAME

SCREEN WALLS

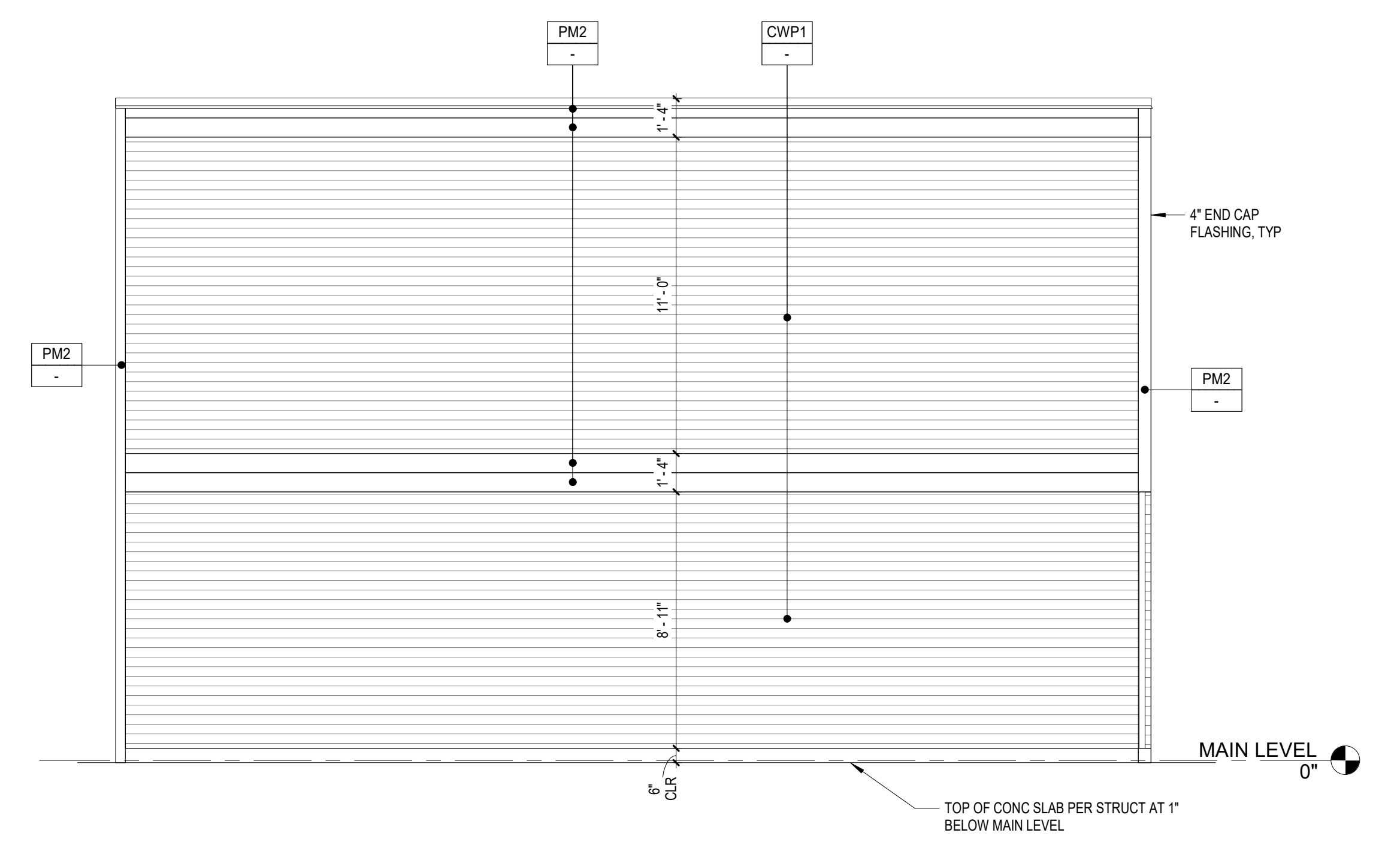
SHEET NUMBER REVISION
A059 1

EXTERIOR MATERIAL SCHEDULE

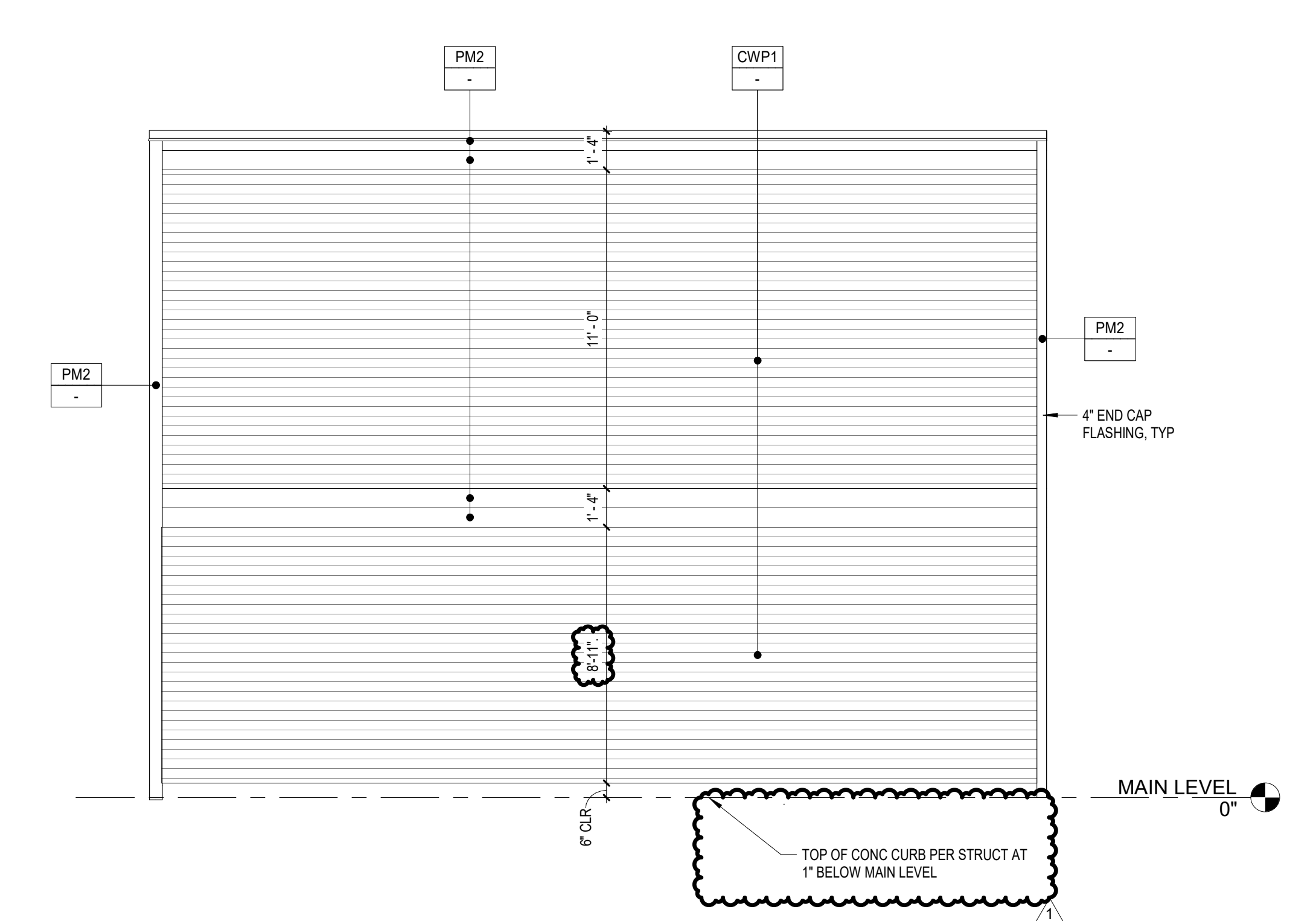
MARK	MATERIAL	DESCRIPTION	FINISH
CP1	CONCRETE	SMOOTH FACE TILT-UP CONCRETE PANEL, W/ REVEALS	PT-2
CP2	CONCRETE	TEXTURED CONCRETE USING FORMLINER	PT-4
CWP1	WALL PANEL	AEP SPAN NU-WAVE, 30% OPEN AREA, OLD TOWN GRAY, ALUMINUM PANELS OF SIMILAR APPEARANCE ARE AN ACCEPTABLE ALTERNATE.	-
MM1	METAL	METAL DOORS AND OTHER METAL SURFACES	PT-3
PM1	METAL	PREFINISHED METAL TO MATCH LOUVER COLOR	-
PM2	METAL	PREFINISHED METAL TO MATCH PT-3	-



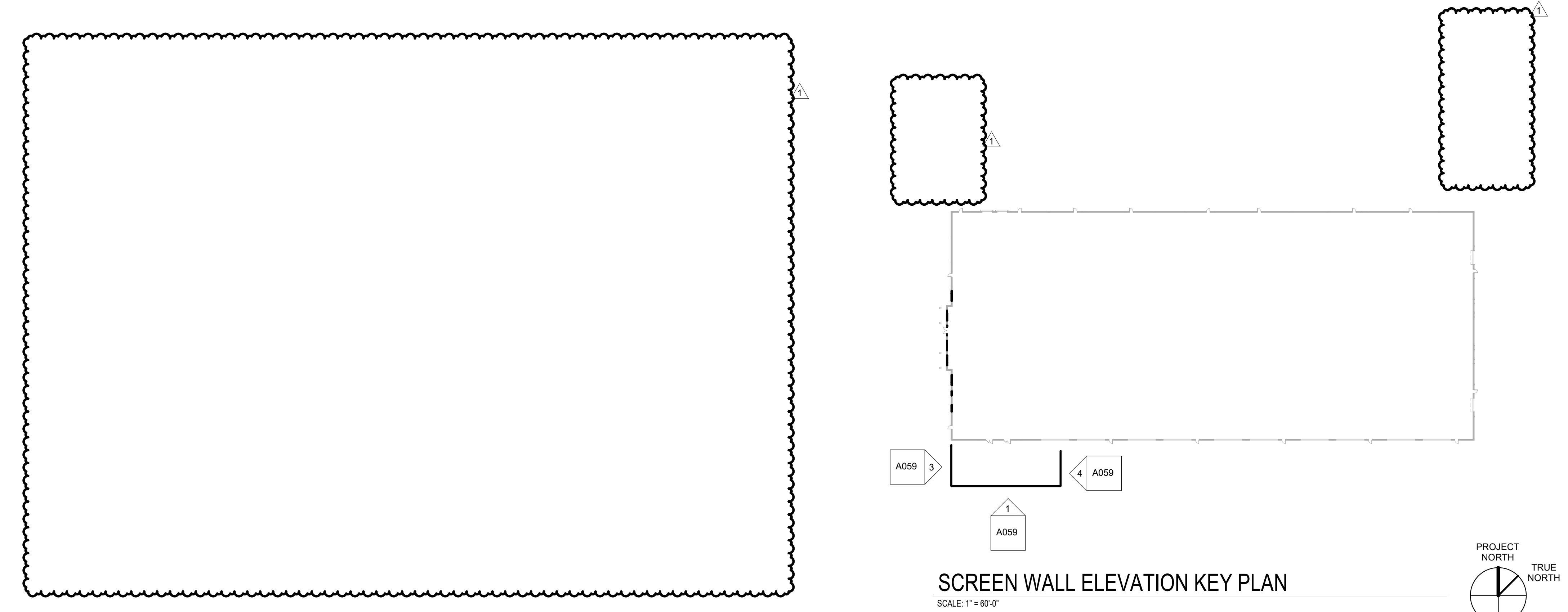
1 TANK SCREEN WALL - SOUTH ELEVATION
SCALE: 1/4" = 1'-0"



3 TANK SCREEN WALL - WEST ELEVATION
SCALE: 1/4" = 1'-0"



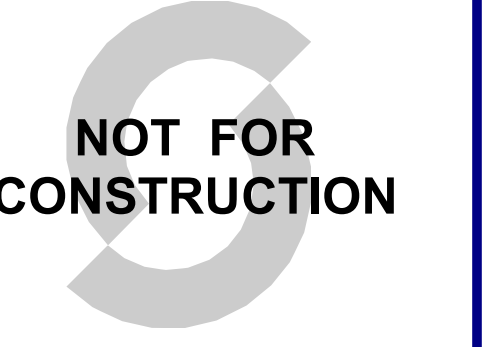
4 TANK SCREEN WALL - EAST ELEVATION
SCALE: 1/4" = 1'-0"



SCREEN WALL ELEVATION KEY PLAN
SCALE: 1" = 60'-0"

CONFIDENTIAL
THIS DRAWING AND ASSOCIATED DESIGN ELEMENTS ARE CONFIDENTIAL AND THE PROPERTY OF SALAS O'BRIEN, WHICH IS THE REGISTERED ARCHITECT OF RECORD. ANY UNAUTHORIZED REUSE OR REPRODUCTION IS PROHIBITED UNLESS OTHERWISE AGREED TO BY SALAS O'BRIEN. THIS DRAWING (AS WELL AS ANY COPIES) SHALL BE RETURNED TO SALAS O'BRIEN UPON REQUEST.

PROFESSIONAL SEAL



Not for permits, pricing or other official purposes. This document has not been completed or checked and is for general information or comment only.

ISSUE DATE	DESCRIPTION
2023-10-27	BID SET



2023-05599-00
OPPIDAN

10 MW ALBQ
Data Center

10 MW Data Center Prototype
Daylona Road NW, Albuquerque, New Mexico

NOTES



REVISIONS	DESCRIPTION	DATE
A	DFT Resubmittal	2024-04-23

CHECKED BY: MK
DRAWN BY: DT

SHEET NAME

OVERALL EXTERIOR ELEVATIONS

SHEET NUMBER	REVISION
A600	1

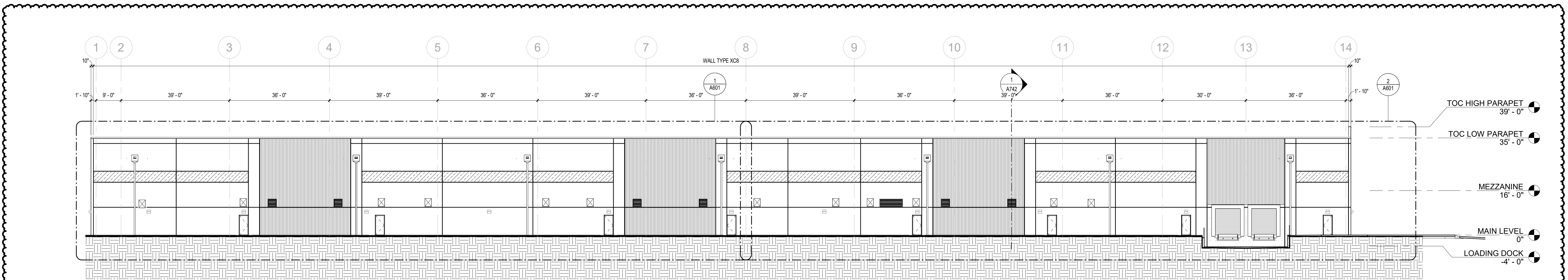
EXTERIOR FINISH LEGEND

<p>DOOR: 100 SCHEDULED NUMBER WIDTH: 34" x 200" MAX EXT</p> <p>EQUIPMENT: 11-A</p> <p>PARTITION: 11-A WALL / PARTITION STOREFRONT CURTAIN WALL TILT-UP PANEL</p>	<p>CP1: CONCRETE MFR: CONCRETE MIX: FINISH: SMOOTH</p> <p>MATERIAL 2: MFR: CONCRETE MIX: FINISH: TEXTURE:</p> <p>MATERIAL 3: MFR: CONCRETE MIX: FINISH: TEXTURE:</p>	<p>CP1: CONC. / PAINTED STRIPE MFR: CONCRETE MIX: FINISH: "META BLUE"</p> <p>CP1: CONC. MFR: CONCRETE MIX: FINISH: SMOOTH, PT-4 GRAY</p> <p>CP2: CONC. MFR: FITZGERALD PRODUCT: FORMLINERS 1935 RANDOM PLANK VERTICAL ORIENTATION CONCRETE MIX: FINISH: TEXTURED, PT-4 GRAY</p>
--	--	---

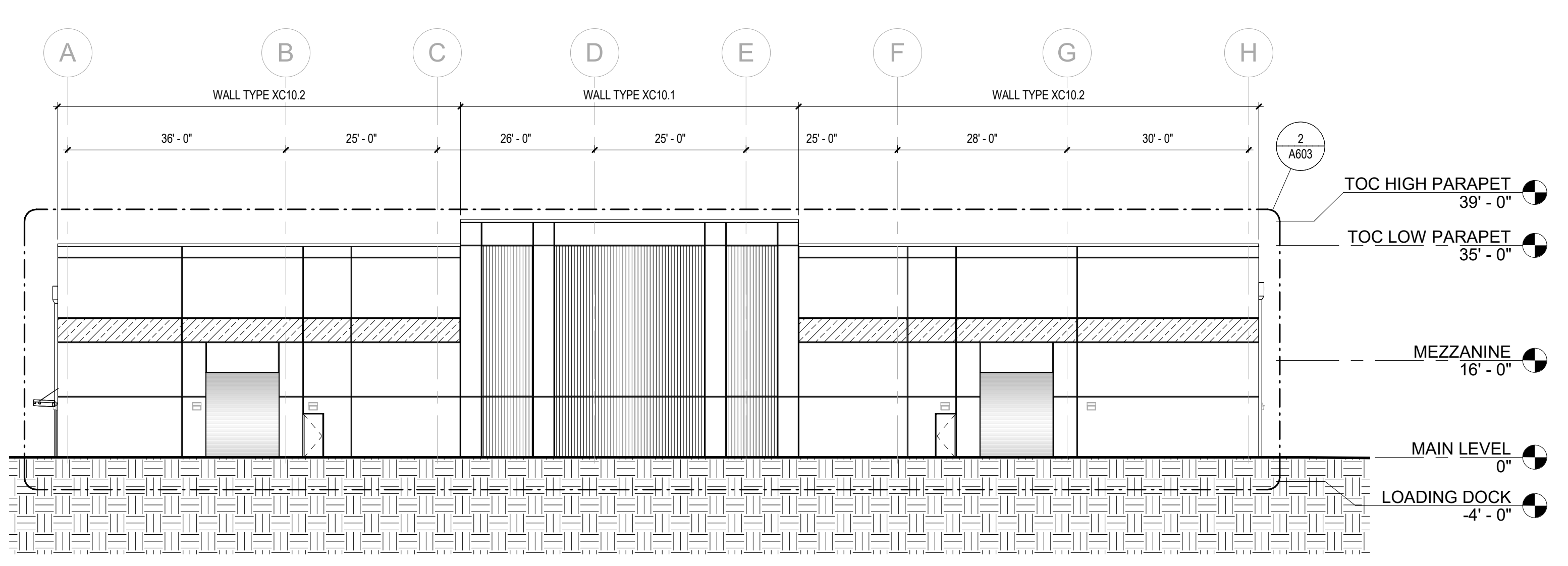
EXTERIOR MATERIAL SCHEDULE B

MARK	MATERIAL	DESCRIPTION	FINISH
CP1	CONCRETE	SMOOTH FACE TILT-UP CONCRETE PANEL W/ REVEALS	PT-2
CWP1	WALL PANEL	AEP SPAN N/L/WAVE, 30% OPEN AREA, OLD TOWN GRAY, ALUMINUM PANELS OF SIMILAR APPEARANCE ARE AN ACCEPTABLE ALTERNATE.	
MM1	METAL	METAL DOORS AND OTHER METAL SURFACES	PT-3
PM1	METAL	PREFINISHED METAL TO MATCH LOUVER COLOR	
PM2	METAL	PREFINISHED METAL TO MATCH PT-3	

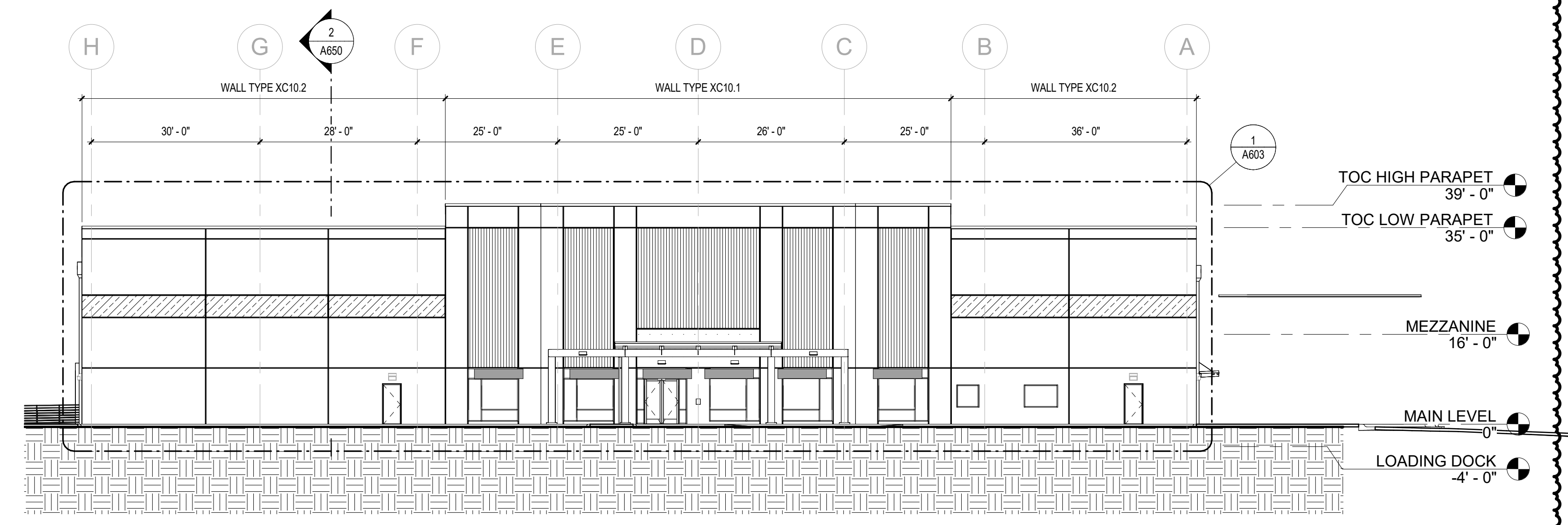
3' 1' 1/2" 3/16" 3/32" 1/16" 1/32" 3/8" 1/2" 3/4" 1" 1 1/2" 2" 3" 4" 5" 6" 7" 8" 9" 10" 11" 12" 13" 14" 15" 16" 17" 18" 19" 20" 21" 22" 23" 24" 25" 26" 27" 28" 29" 30" 31" 32" 33" 34" 35" 36" 37" 38" 39" 40" 41" 42" 43" 44" 45" 46" 47" 48" 49" 50" 51" 52" 53" 54" 55" 56" 57" 58" 59" 60" 61" 62" 63" 64" 65" 66" 67" 68" 69" 70" 71" 72" 73" 74" 75" 76" 77" 78" 79" 80" 81" 82" 83" 84" 85" 86" 87" 88" 89" 90" 91" 92" 93" 94" 95" 96" 97" 98" 99" 100"



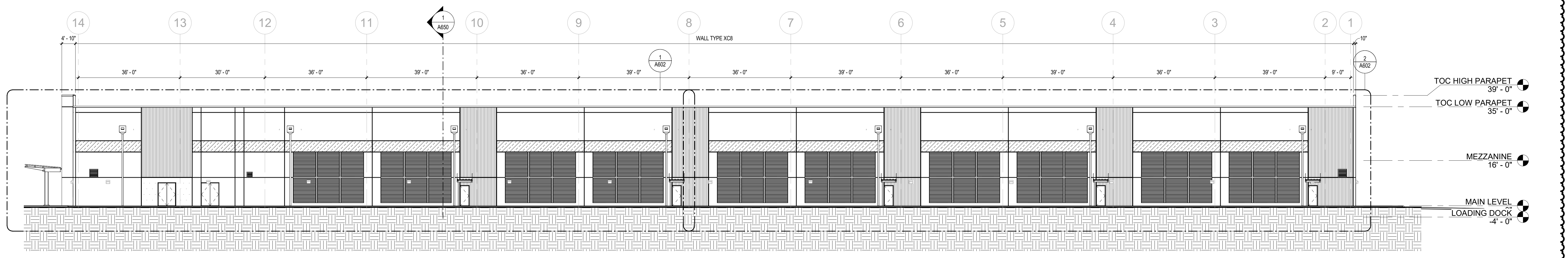
1 NORTH EXTERIOR ELEVATION
SCALE: 1/16" = 1'-0"



2 EAST EXTERIOR ELEVATION
SCALE: 1/16" = 1'-0"



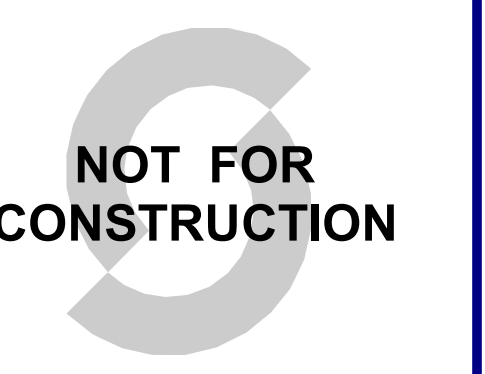
3 WEST EXTERIOR ELEVATION
SCALE: 1/16" = 1'-0"



4 SOUTH EXTERIOR ELEVATION
SCALE: 1/16" = 1'-0"

CONFIDENTIAL
THIS DRAWING AND ASSOCIATED DESIGN ELEMENTS ARE CONFIDENTIAL AND THE PROPERTY OF SALAS O'BRIEN, WHICH RETAINS ALL COMMON LAW, COPYRIGHT, STATUTORY AND OTHER RIGHTS THEREIN. ANY UNAUTHORIZED REUSE OR REPRODUCTION IS PROHIBITED UNLESS OTHERWISE AGREED TO BY SALAS O'BRIEN. THIS DRAWING (AS WELL AS ANY COPIES) SHALL BE RETURNED TO SALAS O'BRIEN UPON REQUEST.

PROFESSIONAL SEAL



Not for permits, pricing or other official purposes. This document has not been completed or checked and is for general information or comment only.

ISSUE DATE	DESCRIPTION
2023-10-27	BID SET

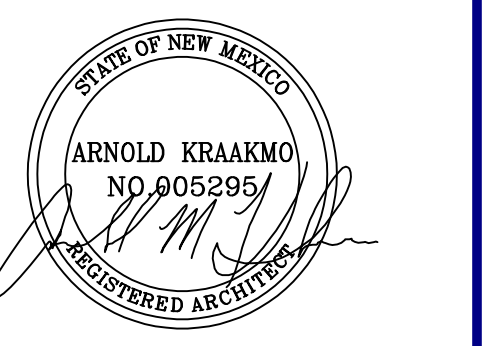


2023-05599-00
OPPIDAN

10 MW ALBQ Data Center

10 MW Data Center Prototype
Daylona Road NW, Albuquerque, New Mexico

NOTES



REVISIONS

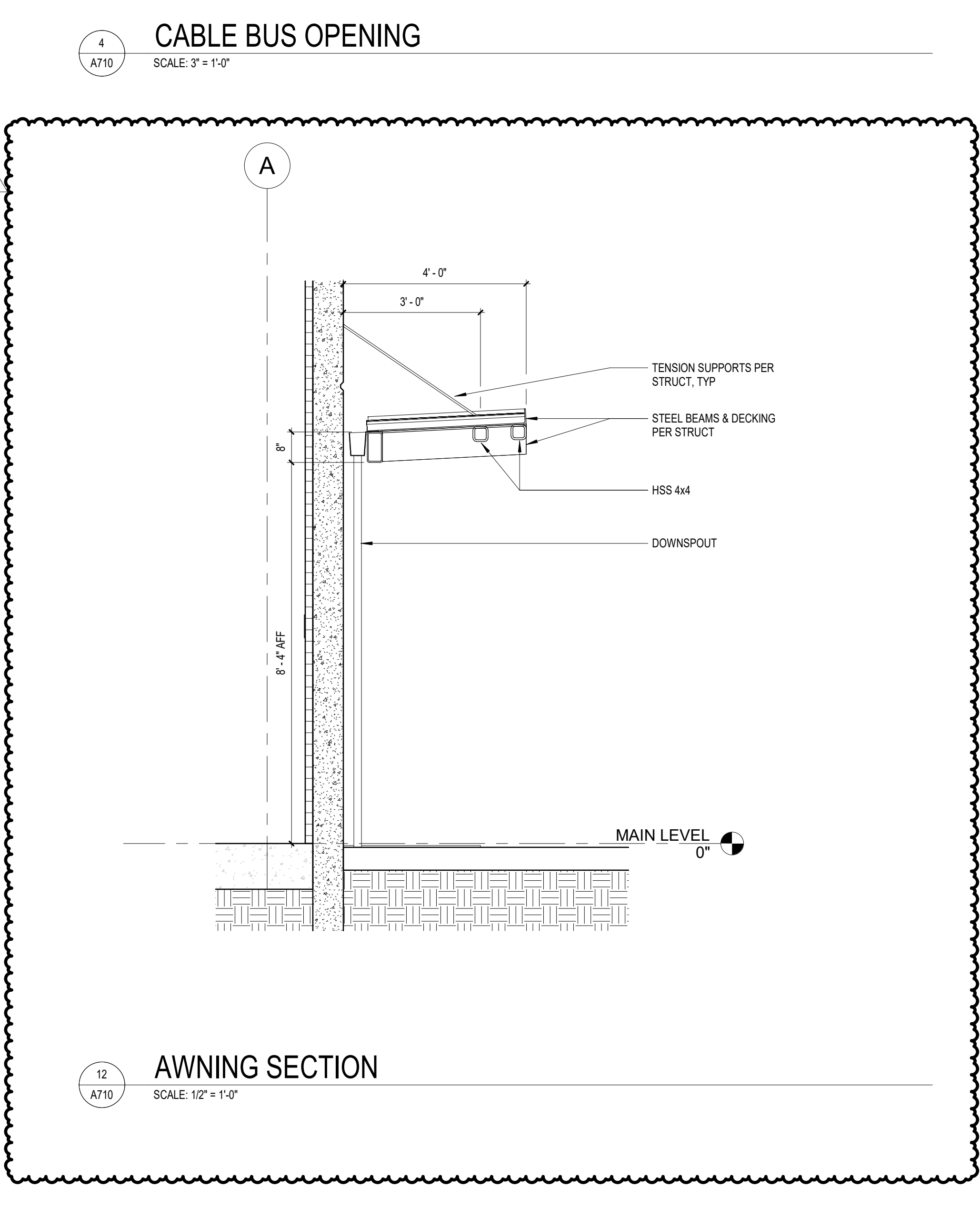
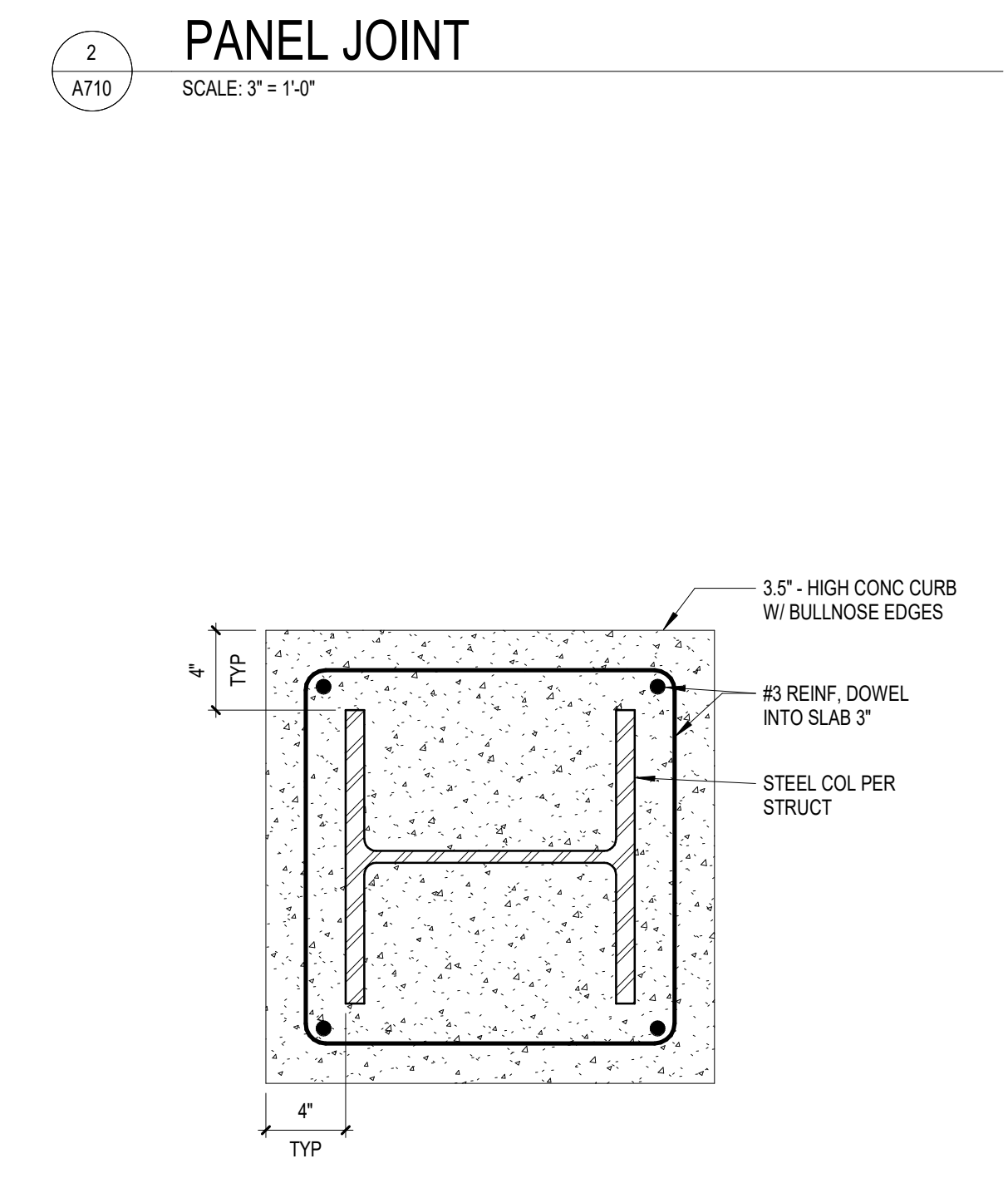
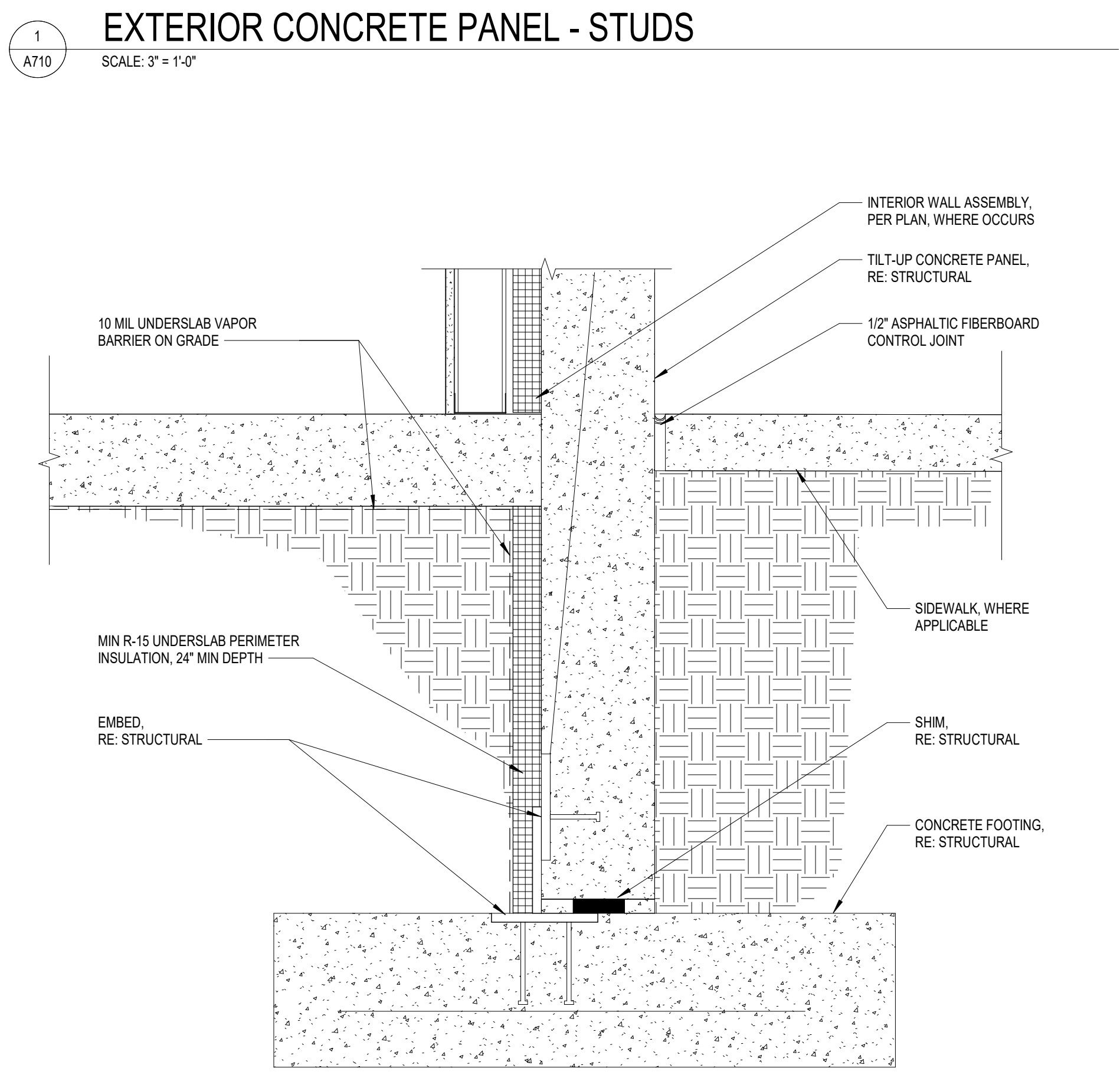
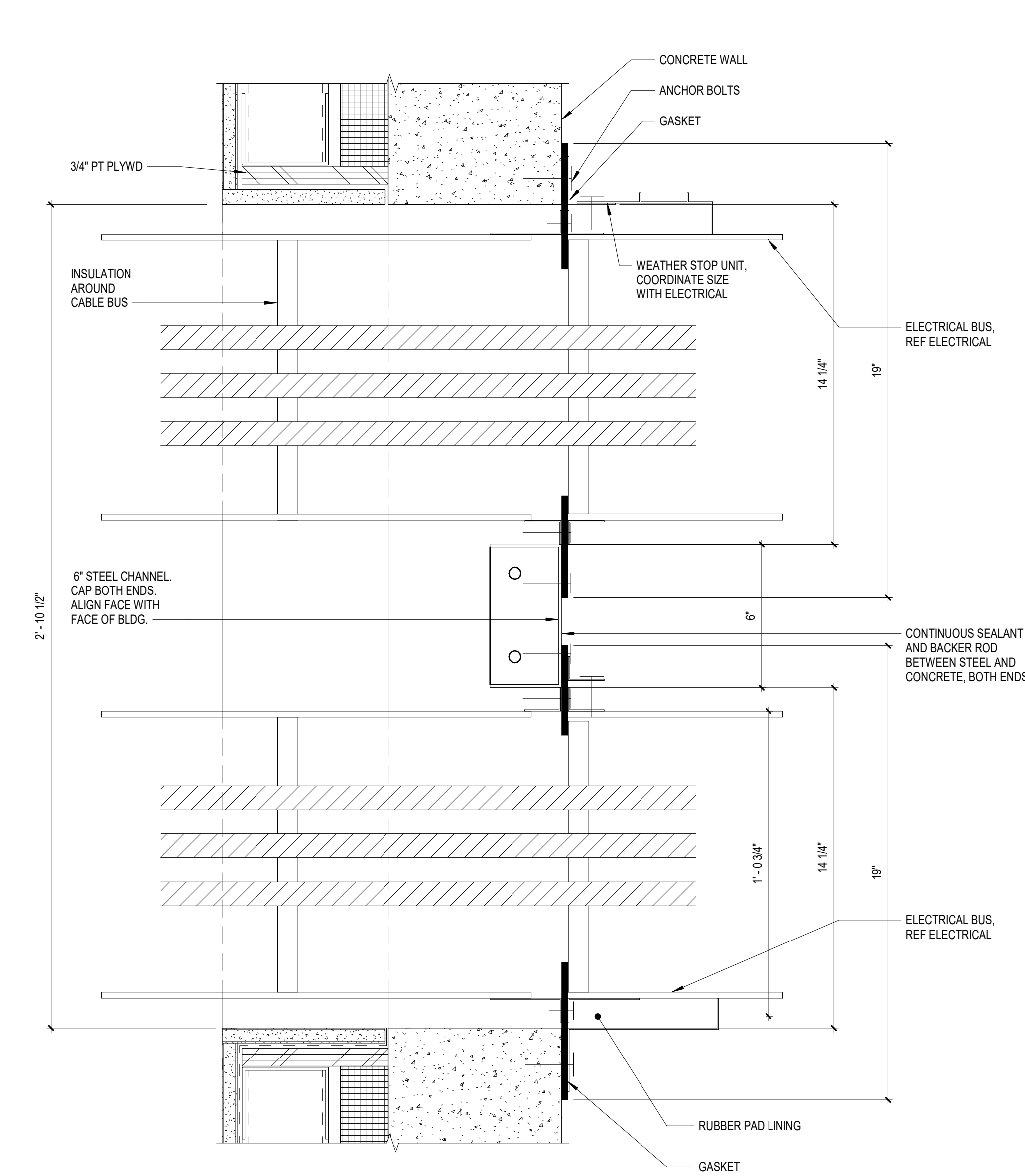
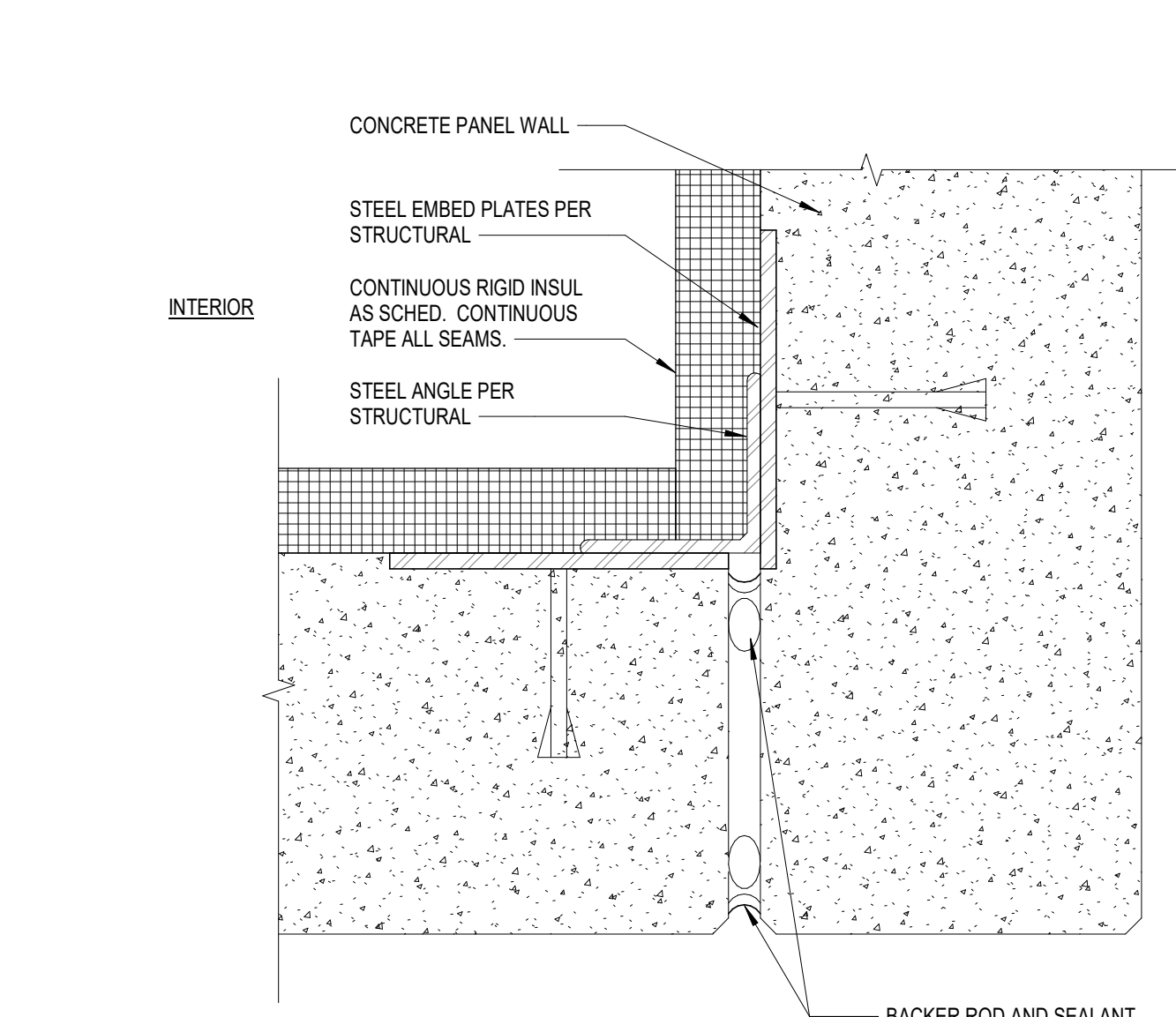
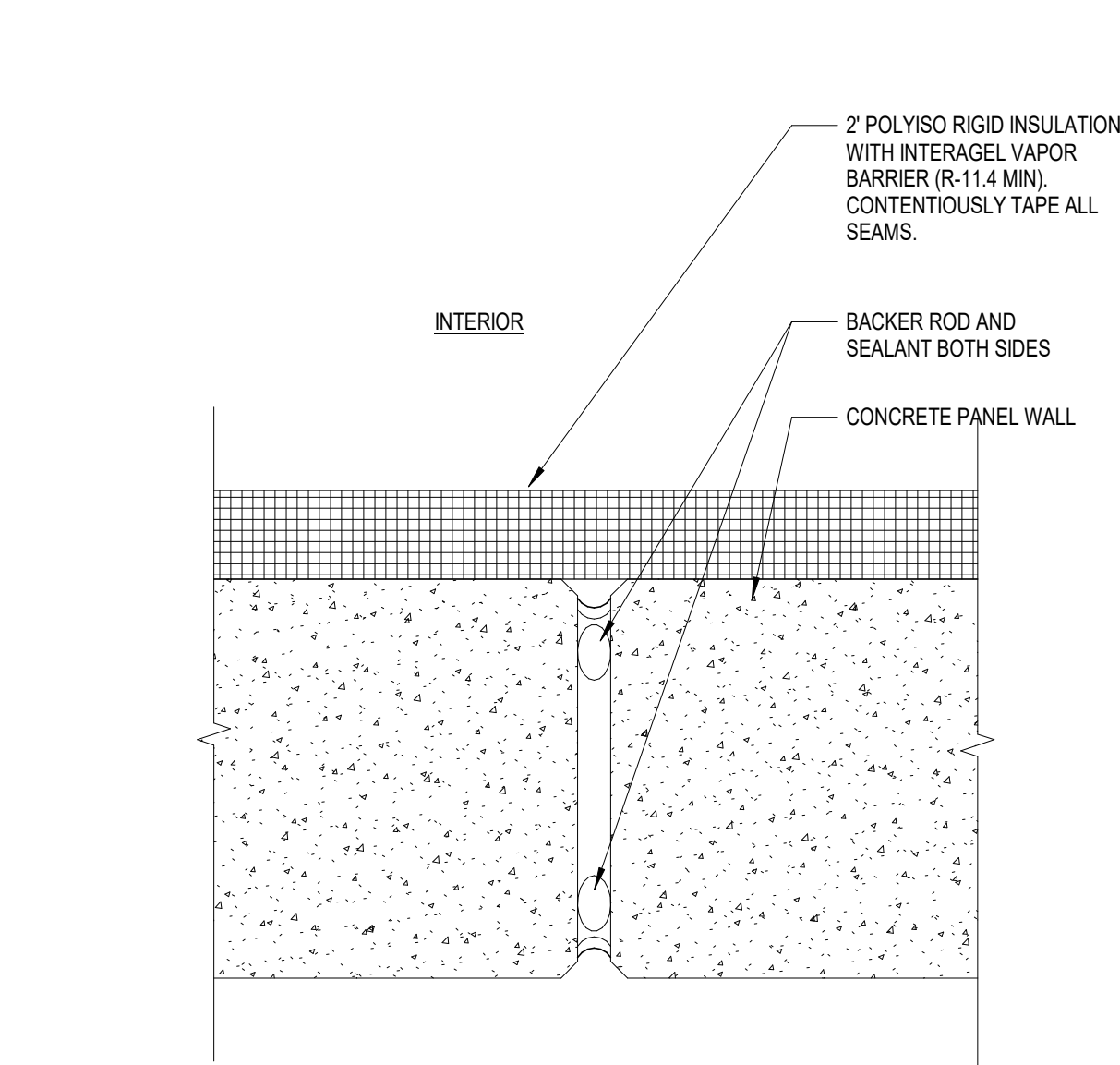
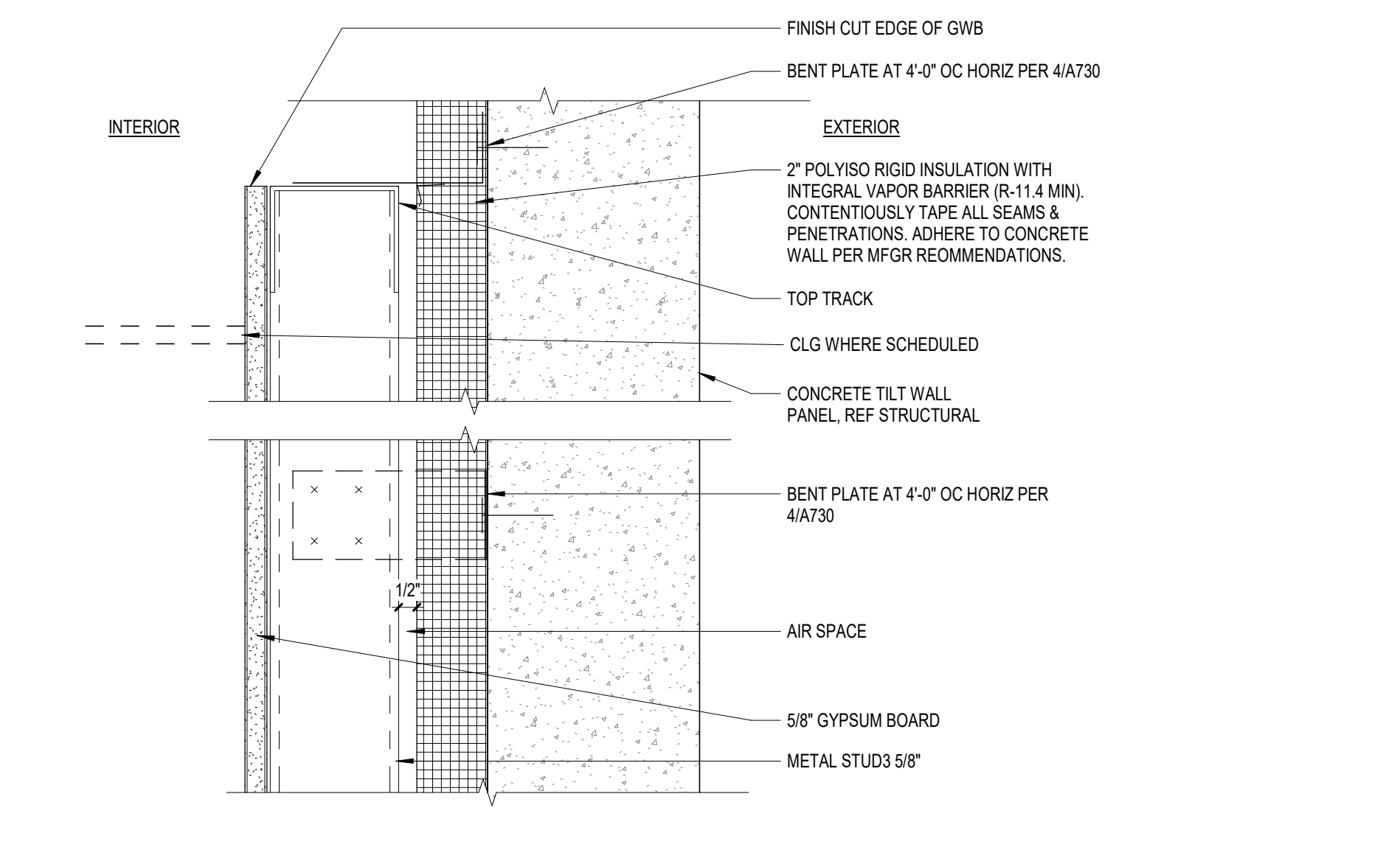
Δ	DESCRIPTION	DATE
1	DFT Resubmittal	2024-04-23

CHECKED BY MK
DRAWN BY DT

SHEET NAME

EXTERIOR WALL DETAILS

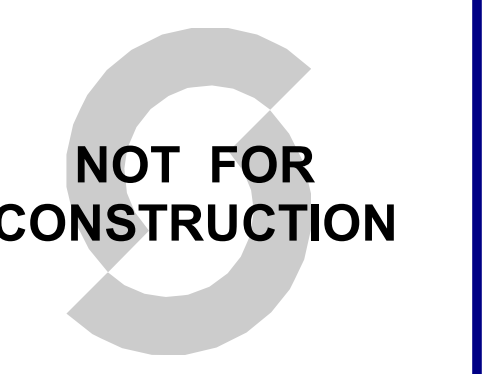
SHEET NUMBER A710
REVISION 1



4/24/2024 4:25:45 AM
Autodesk Docs: /0203-05599-00P-Albuquerque OPP-Albuquerque DC/OPP5599-SOB-XXZ-3D-A-1001.rvt

CONFIDENTIAL
THIS DRAWING AND ASSOCIATED DESIGN ELEMENTS ARE CONFIDENTIAL AND THE PROPERTY OF SALAS O'BRIEN, WHICH IS THE TRADE NAME OF SALAS O'BRIEN, INC. ANY UNAUTHORIZED REUSE OR REPRODUCTION IS PROHIBITED UNLESS OTHERWISE AGREED TO BY SALAS O'BRIEN. THIS DRAWING, AS WELL AS ANY COPIES, SHALL BE RETURNED TO SALAS O'BRIEN UPON REQUEST.

PROFESSIONAL SEAL



Not for permits, pricing or other official purposes. This document has not been completed or checked and is for general information or comment only.

ISSUE DATE DESCRIPTION
2023-10-27 BID SET



2023-05599-00
OPPIDAN

10 MW ALBQ Data Center

10 MW Data Center Prototype
Daytona Road NW, Albuquerque, New Mexico

NOTES

REVISIONS

NO.	DESCRIPTION	DATE
1	DFT Resubmittal	2024-04-23

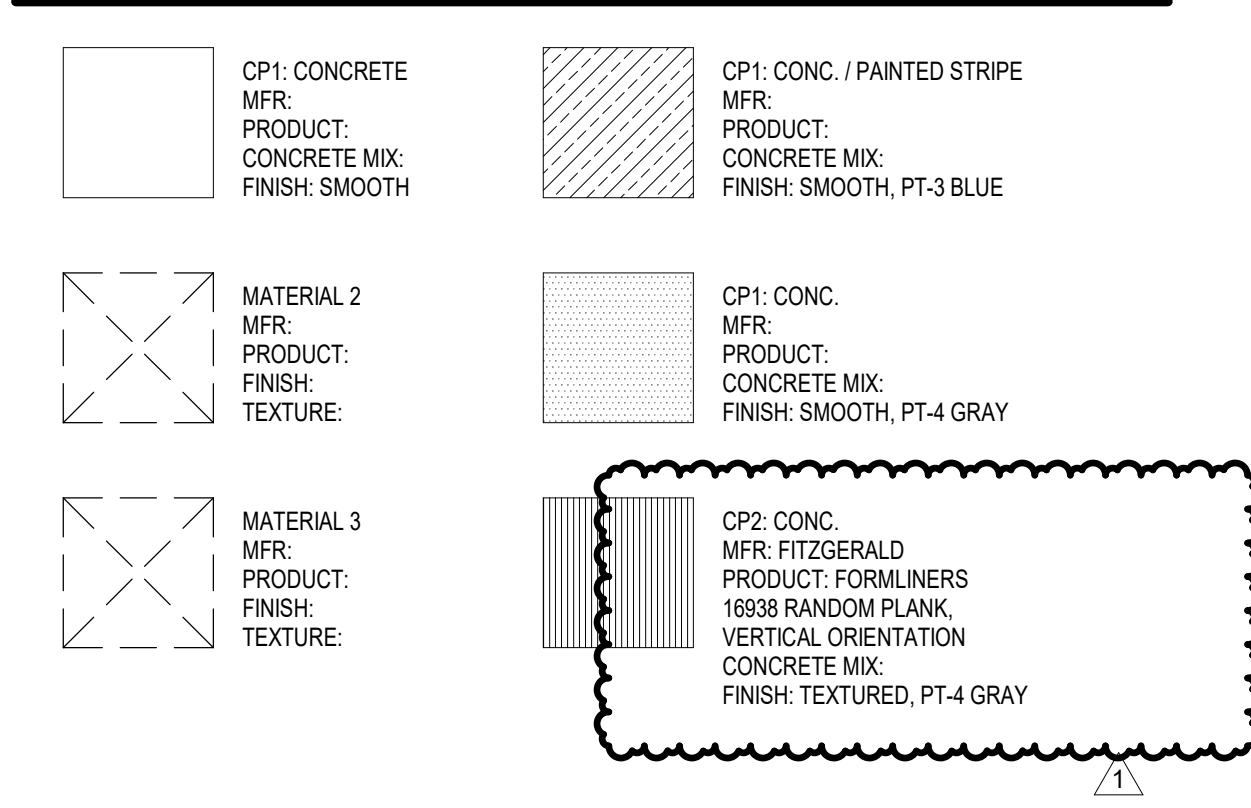
CHECKED BY DRAWN BY
MK DT

SHEET NAME

(WEST & EAST) COLOR ELEVATIONS

SHEET NUMBER REVISION
A901 1

EXTERIOR FINISH LEGEND



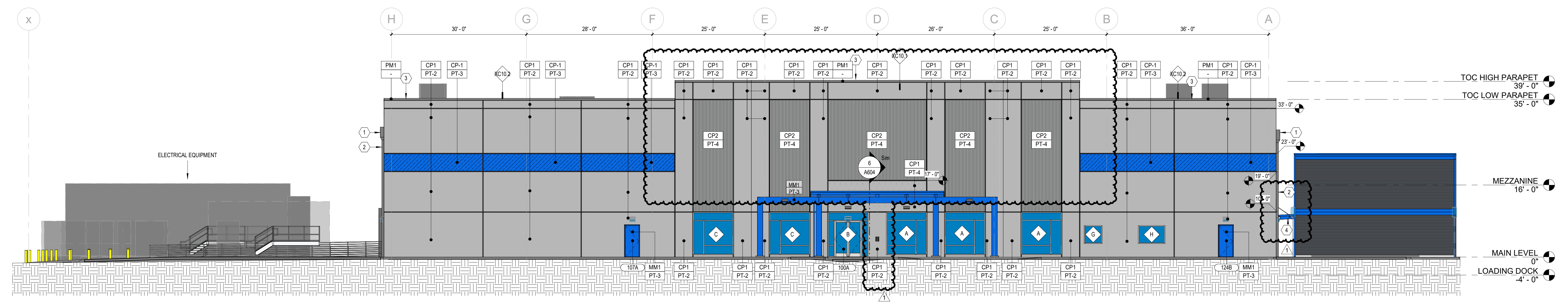
EXTERIOR MATERIAL SCHEDULE B

MARK	MATERIAL	DESCRIPTION	FINISH
CP1	CONCRETE	SMOOTH FACE TILT-UP CONCRETE PANEL, W/ REVEALS	PT-2
CP1P	WALL PANEL	AEP SPAN NU-WAVE, 30% OPEN AREA, OLD TOWN GRAY, ALUMINUM PANELS OF SIMILAR APPEARANCE ARE AN ACCEPTABLE ALTERNATE.	-
MM1	METAL	METAL DOORS AND OTHER METAL SURFACES	PT-3
PM1	METAL	PREFINISHED METAL TO MATCH LOUVER COLOR	-
PM2	METAL	PREFINISHED METAL TO MATCH PT-3	-

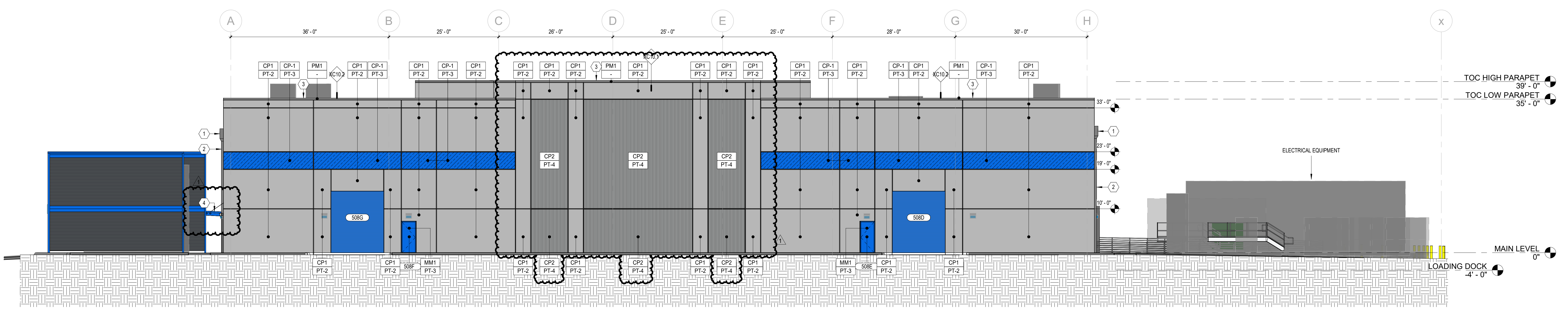
SHEET KEYNOTES

KEY	DESCRIPTION
1	THRU-WALL SCURPER TO CONDUCTOR HEAD & DOWNSPOUT ON EXTERIOR FACE OF BUILDING, W/ 2" DEEP x 3/4" DIAMETER SUBSP ON ROOF. SEE DETAILS 14 B, 15A/20
2	DOWNSPOUT FROM ROOF TO TIGHTLINE. SEE CIVIL. SEE DETAIL 6A/720
3	STANDING SEAM COPING CAP ON PARAPET. SEE DETAILS 6 & 12A/720
4	AWNING CENTERED OVER DOOR, 4'-3 1/4". SEE DETAIL 12A/110

3' 1/12" 1" 3/4" 1/2" 3/8" 1/4" 3/16" 1/8" 3/32" 1/16" 1/32" 3/64"



1 PROJECT WEST (FRONT) ELEVATION
SCALE: 1" = 10'-0"

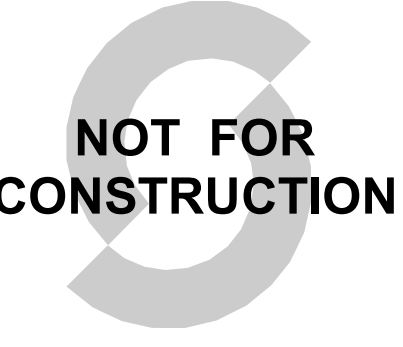


2 PROJECT EAST (REAR) ELEVATION
SCALE: 1" = 10'-0"

Autodesk Docs: /0203-05599-00P-Albuquerque-OPP-Albuquerque-DC/OPP5599-50B-KXXZ-3D-A-1001.rvt
 4/24/2024 8:57:06 AM

CONFIDENTIAL
THIS DRAWING AND ASSOCIATED DESIGN ELEMENTS ARE CONFIDENTIAL AND THE PROPERTY OF SALAS O'BRIEN, WHICH IS THE TRADING COMPANY OF SALAS O'BRIEN. STATUTORY AND OTHER RIGHTS THEREIN, AND ANY UNAUTHORIZED REUSE OR REPRODUCTION IS PROHIBITED UNLESS OTHERWISE AGREED TO BY SALAS O'BRIEN. THIS DRAWING (AS WELL AS ANY COPIES) SHALL BE RETURNED TO SALAS O'BRIEN UPON REQUEST.

PROFESSIONAL SEAL



Not for permits, pricing or other official purposes. This document has not been completed or checked and is for general information or comment only.

ISSUE DATE	DESCRIPTION
2023-10-27	BID SET



2023-05599-00
OPPIDAN

10 MW ALBQ Data Center

10 MW Data Center Prototype
Daylona Road NW, Albuquerque, New Mexico

NOTES



REVISIONS

Δ	DESCRIPTION	DATE
1	DFT Resubmittal	2024-04-23

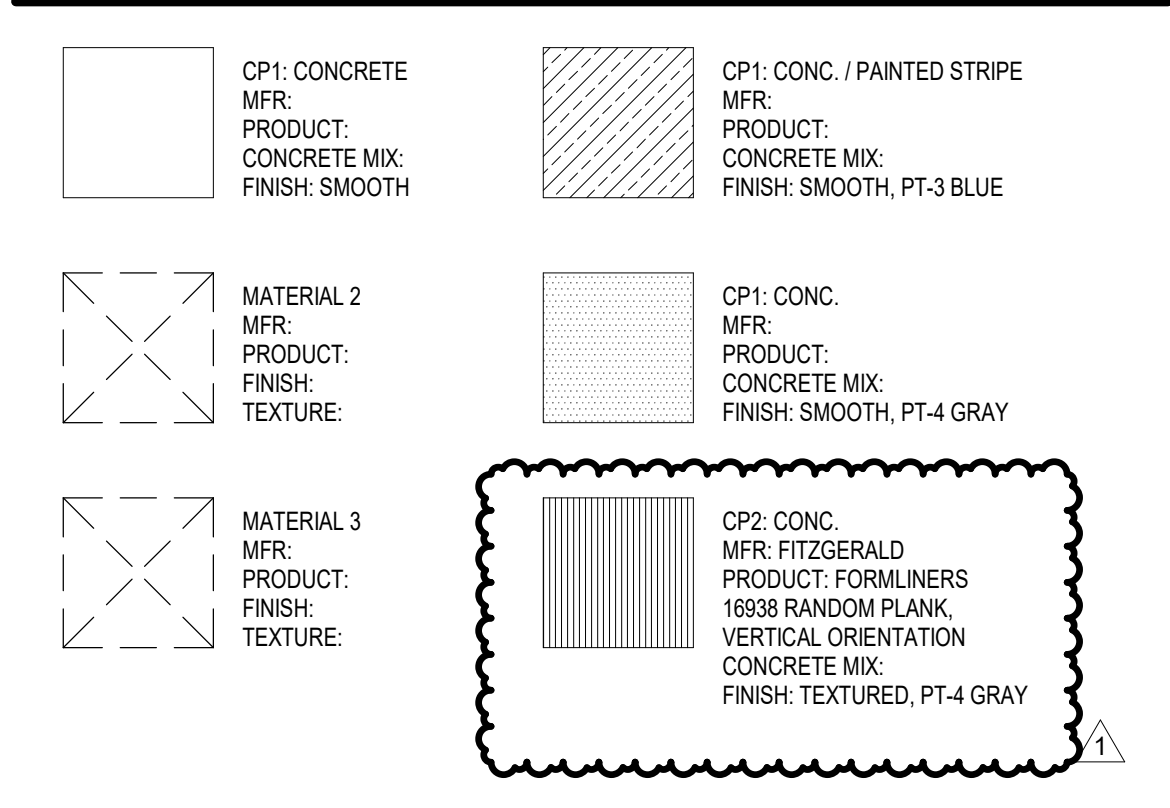
CHECKED BY: MK
DRAWN BY: DT

SHEET NAME

(NORTH) COLOR ELEVATION - DETAIL

SHEET NUMBER: A902
REVISION: 1

EXTERIOR FINISH LEGEND

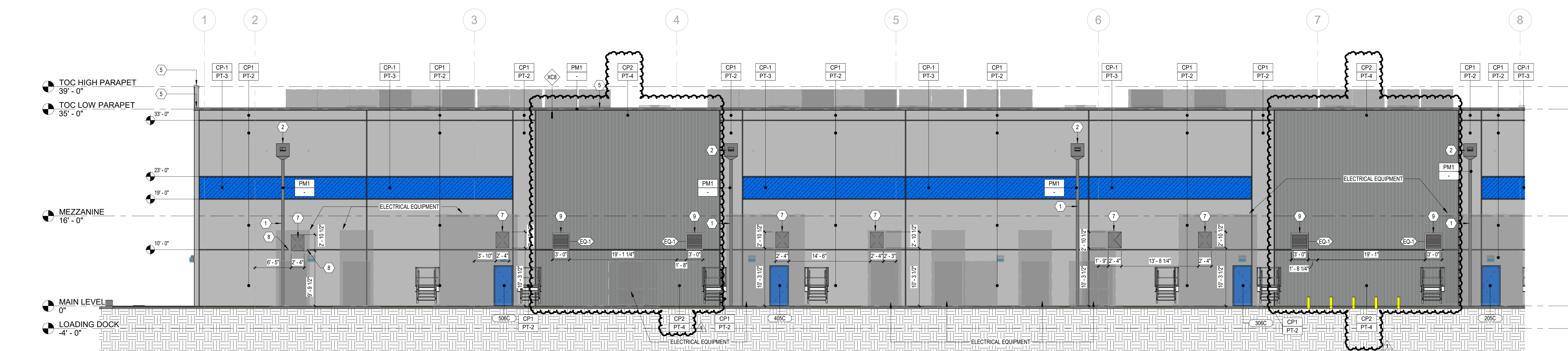
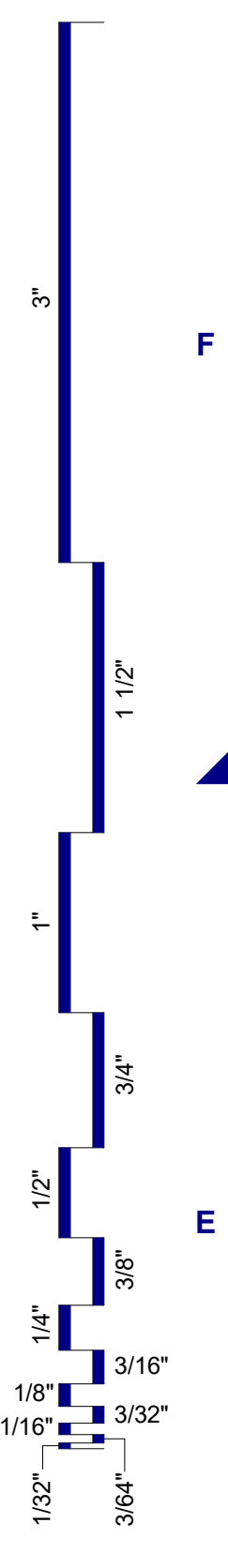


EXTERIOR MATERIAL SCHEDULE B

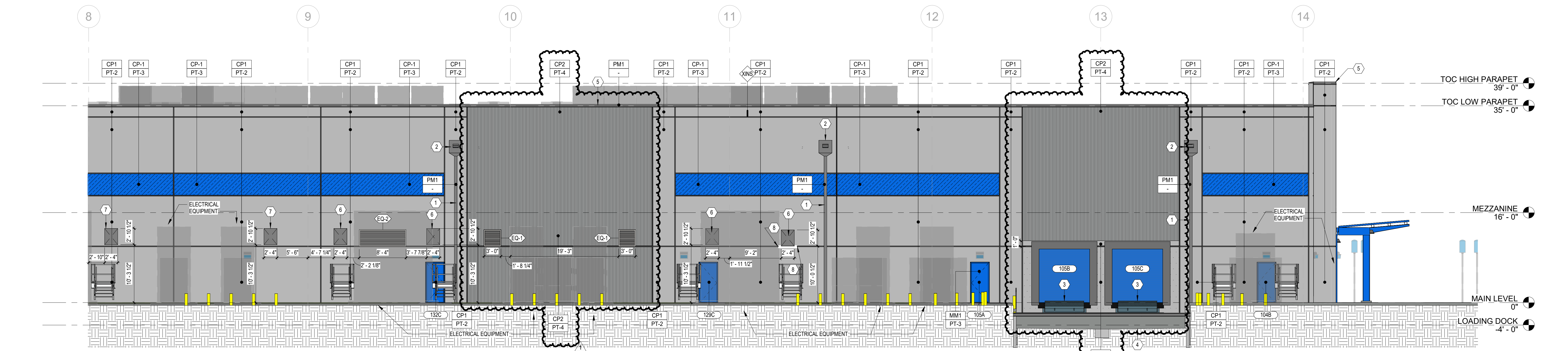
MARK	MATERIAL	DESCRIPTION	FINISH
CP1	CONCRETE	SMOOTH FACE TILT-UP CONCRETE PANEL, W/ REVEALS	PT-2
CP1P1	WALL PANEL	AEP SPAN NU-WAVE, 30% OPEN AREA, OLD TOWN GRAY, ALUMINUM PANELS OF SIMILAR APPEARANCE ARE AN ACCEPTABLE ALTERNATE.	-
MM1	METAL	METAL DOORS AND OTHER METAL SURFACES	PT-3
PM1	METAL	PREFINISHED METAL TO MATCH LOUVER COLOR	-
PM2	METAL	PREFINISHED METAL TO MATCH PT-3	-

SHEET KEYNOTES

KEY	DESCRIPTION
1	DOWNSPOUT FROM ROOF TO TIGHTLINE. SEE CIVIL. SEE DETAIL 6A720
2	THRU-WALL SCUPPER TO CONDUCTOR HEAD & DOWNSPOUT ON EXTERIOR FACE OF BUILDING, W/ 2" DEEP x 24" DIAMETER SLUMP ON ROOF. SEE DETAILS 14.4 & 15A720
3	LOADING DOCK LEVELER & BUMPERS. SEE DETAILS 1 & 2/A056
4	LOADING DOCK RAMP. SEE CIVIL
5	STANDING SEAM COPING CAP ON PARAPET. SEE DETAILS 4 & 12/A720
6	WALL OPENING FOR CABLE BUS. SEE DETAIL 6A710
7	RIGID INSULATION & SHEET METAL BLANKING PANEL IN OPENING FOR FUTURE ELECT. EQUIP. SEE DTL. 3A711
8	END CONCRETE REVEAL 6" FROM OPENING.
9	RIGID INSULATION & SHEET METAL BLANKING PANEL BEHIND LOUVER. SEE DTL. 6A711



1 PROJECT NORTH (LEFT) ELEVATION
SCALE: 1/8" = 1'-0"

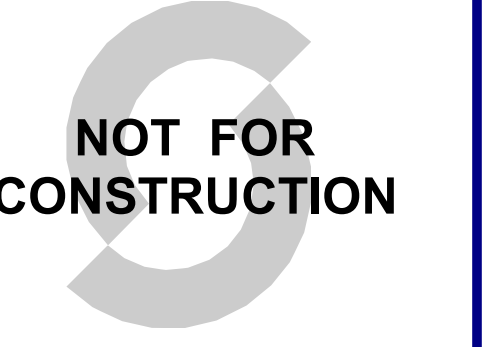


2 PROJECT NORTH (LEFT) ELEVATION
SCALE: 1/8" = 1'-0"

Autodesk Docs: /0203-05599-00P-Albuquerque-OPP-Albuquerque-DC/OPP5599-50B-XXZ-3D-A-1001.rvt 4/24/2024 8:57:34 AM

CONFIDENTIAL
THIS DRAWING AND ASSOCIATED DESIGN ELEMENTS ARE CONFIDENTIAL AND THE PROPERTY OF SALAS O'BRIEN, WHICH REMAINS THE COMMON LAW COPYRIGHT, STATUTORY AND OTHER RIGHTS THEREOF. ANY UNAUTHORIZED REUSE OR REPRODUCTION IS PROHIBITED UNLESS OTHERWISE AGREED TO BY SALAS O'BRIEN. THIS DRAWING (AS WELL AS ANY COPIES) SHALL BE RETURNED TO SALAS O'BRIEN UPON REQUEST.

PROFESSIONAL SEAL



Not for permits, pricing or other official purposes. This document has not been completed or checked and is for general information or comment only.

ISSUE DATE	DESCRIPTION
2023-10-27	BID SET



2023-05599-00
OPPIDAN

10 MW ALBQ Data Center

10 MW Data Center Prototype
Daytona Road NW, Albuquerque, New Mexico

NOTES



REVISIONS

Δ	DESCRIPTION	DATE
1	DFT Resubmittal	2024-04-23

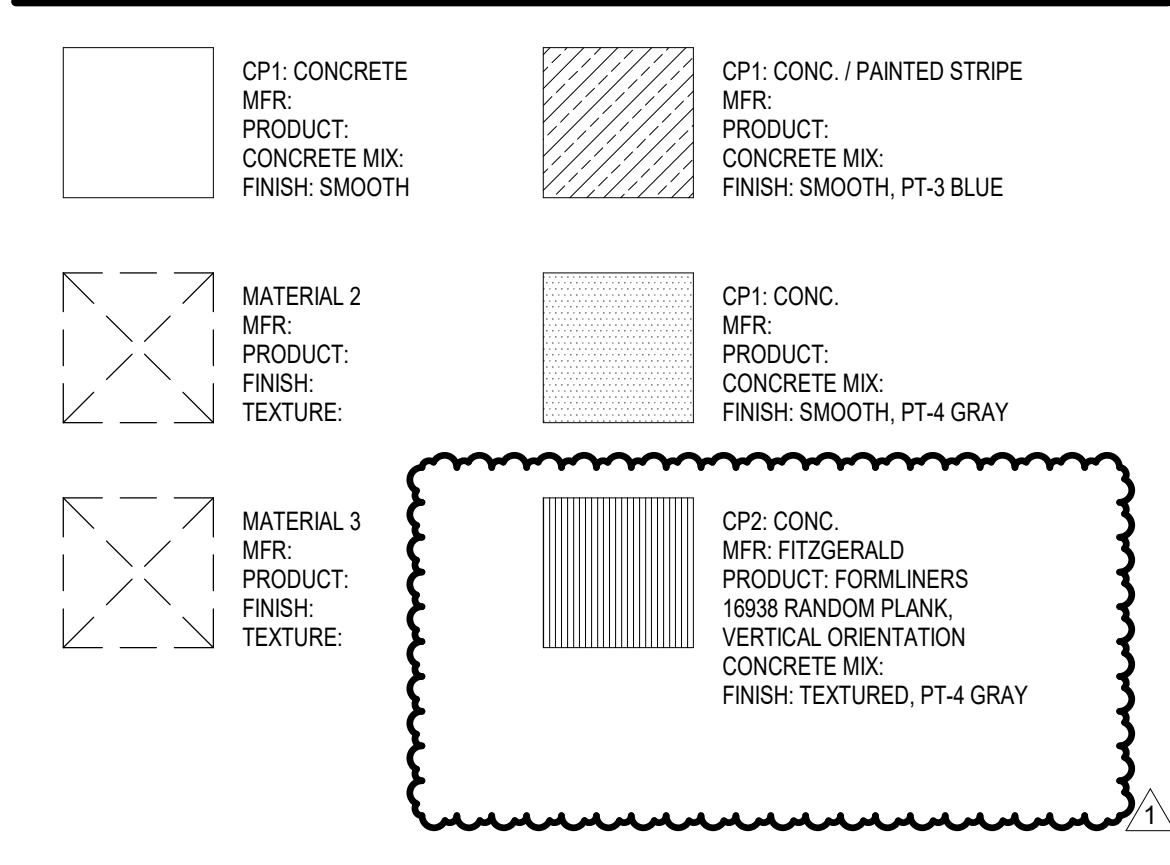
CHECKED BY: MK
DRAWN BY: DT

SHEET NAME

(SOUTH) COLOR ELEVATION - DETAIL

SHEET NUMBER: A903
REVISION: 1

EXTERIOR FINISH LEGEND

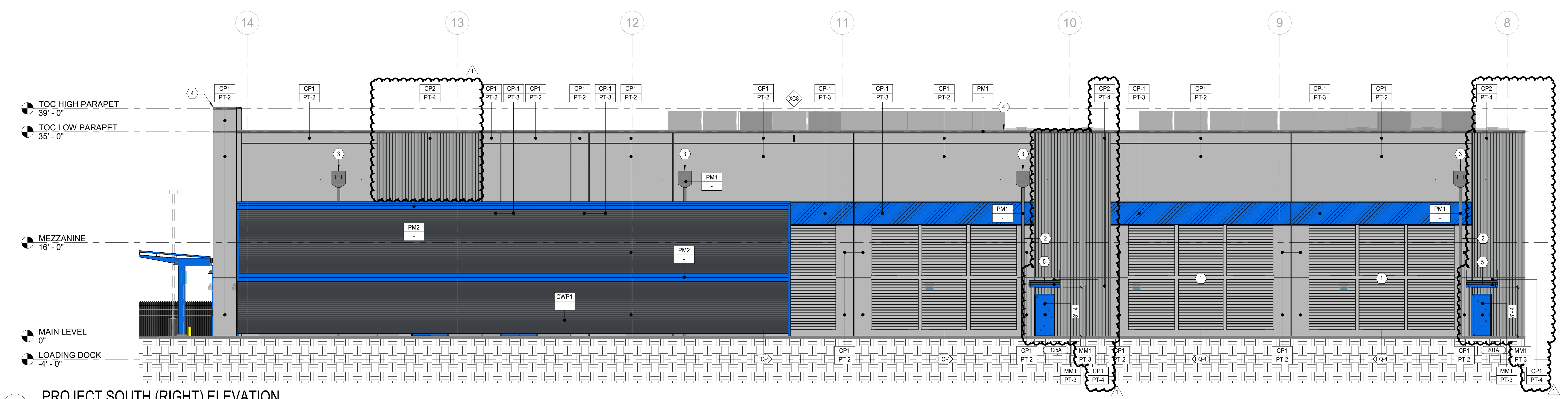
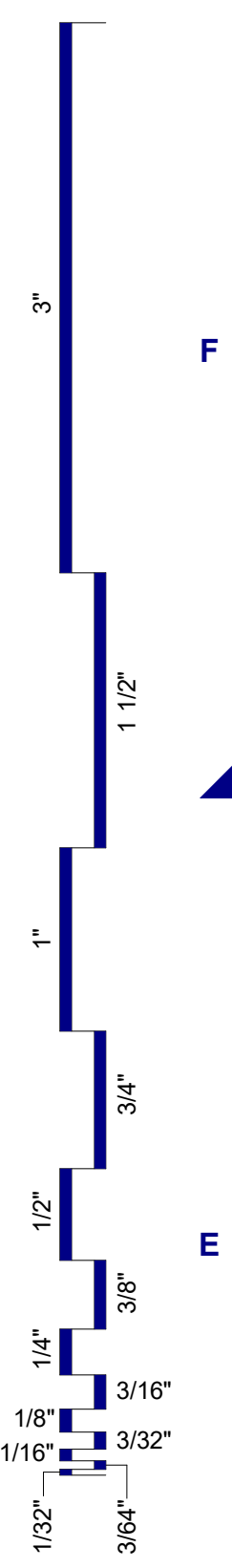


EXTERIOR MATERIAL SCHEDULE B

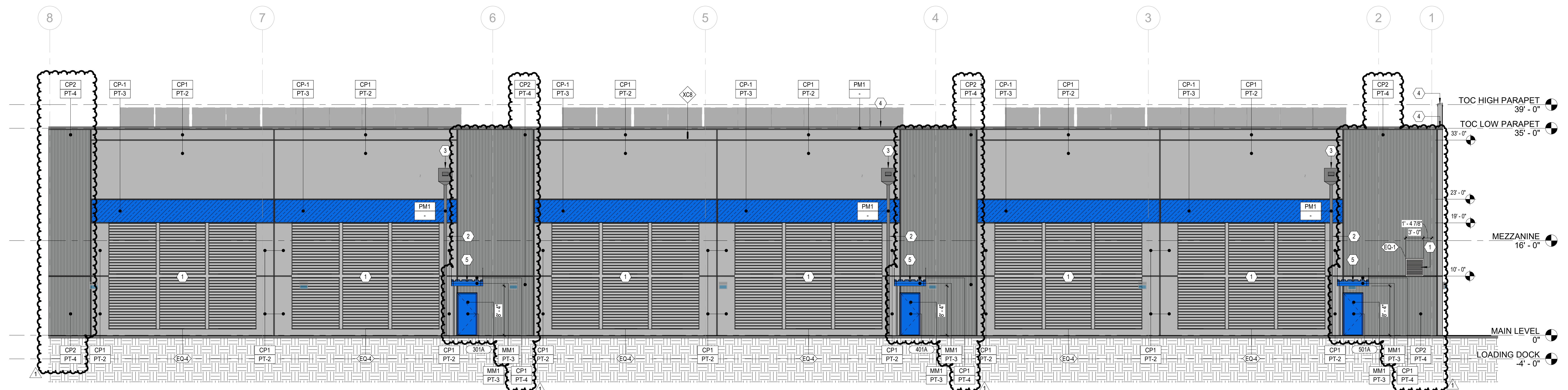
MARK	MATERIAL	DESCRIPTION	FINISH
CP1	CONCRETE	SMOOTH FACE TILT-UP CONCRETE PANEL, W/ REVEALS	PT-2
CWP1	WALL PANEL	AEP SPAN NU-WAVE, 30% OPEN AREA, OLD TOWN GRAY, ALUMINUM PANELS OF SIMILAR APPEARANCE ARE AN ACCEPTABLE ALTERNATE.	-
MM1	METAL	METAL DOORS AND OTHER METAL SURFACES	PT-3
PM2	METAL	PREFINISHED METAL TO MATCH LOUVER COLOR	-
		PREFINISHED METAL TO MATCH PT-3	-

SHEET KEYNOTES

KEY	DESCRIPTION
1	RIGID INSULATION & SHEET METAL BLANKING PANEL BEHIND LOUVER. SEE DETAIL 6A/7/11
2	DOWNSPOUT FROM ROOF TO TIGHTLINE. SEE CIVIL. SEE DETAIL 6A/7/20
3	THRU-WALL SCUPPER TO CONDUCTOR HEAD & DOWNSPOUT ON EXTERIOR FACE OF BUILDING, W/ 2" DEEP x 24" DIAMETER SLUMP ON ROOF. SEE DETAILS 14 & 15A/20
4	STANDING SEAM CORING CAP ON PARAPET. SEE DETAILS 14 & 15A/20
5	AWNING CENTERED OVER DOOR. SEE DETAIL 12A/10



1 PROJECT SOUTH (RIGHT) ELEVATION
SCALE: 1/8" = 1'-0"



2 PROJECT SOUTH (RIGHT) ELEVATION - DETAIL
SCALE: 1/8" = 1'-0"